



Close at hand

Strainers for Hygienic Fluid Handling Equipment, January 2021



Everything at your fingertips

Alfa Laval's solutions for hygienic applications are the result of continuous innovation, and our dedicated efforts to meet the challenges faced by industries. With the Alfa Laval online catalogue, detail of our comprehensive product range can now be conveniently at your fingertips at all times.

Whatever you need, and wherever you are, Alfa Laval's components and expertise are always readily available through our network of over 1500 channel partners, supported by our own sales companies around the world.

Alfa Laval has a wide range of tools and resources to make life easier. Our online catalogue is easily accessible and updated regularly. We also offer the possibility to download 2D and 3D drawings. Go to www.alfalaval.com/high.

At www.alfalaval.com/biopharm you can download the comprehensive Q-doc documentation for our UltraPure portfolio.

Our channel partners also have access to a growing pool of resources at the Alfa Laval eBusiness portal, including full documentation, real-time stock availability and the opportunity to order and track shipments online. As well as being kept up to date on the latest developments through the InSight newsletter.

Discover a world of hygienic solutions at our dedicated portals:

www.alfalaval.com/biopharm

www.alfalaval.com/food

Technical Information

Stainless Steel and Rubber Materials

Stainless Steel

Our stainless steel material have the following demands to the contents of the most essential alloys:

Descriptions	Standard	Chrome Cr%	Nickel Ni%	Molybdenum	
				Mo%	Carbon C%
AISI 304	ASTM A270	18.0-20.0	8.0-10.5	0.0	≤ 0.08
AISI 304L	ASTM A270	18.0-20.0	8.0-12.0	0.0	≤ 0.03
AISI 316L	ASTM A270	16.0-18.0	10.0-14.0	2.0-3.0	≤ 0.03
1.4301 (304)	EN 10088-1 (X 5CrNi18-10)	17.0-19.5	8.0-10.5	0.0	≤ 0.07
1.4307 (304L)	EN 10088-1 (X 2CrNi18-9)	17.5-19.5	8.0-10.0	0.0	≤ 0.03
1.4401 (316)	EN 10088-1 (X 5CrNiMo17-12-2)	16.5-18.5	10.0-13.0	2.0-2.5	≤ 0.07
1.4404 (316L)	EN 10088-1 (X 2CrNiMo17-12-2)	16.5-18.5	10.0-13.0	2.0-2.5	≤ 0.03
1.4435 (316L)	EN 10088-1 (X 2CrNiMo18-14-3)	17.0-19.0	12.5-15.0	2.5-3.0	≤ 0.03
1.4571 (316TI)	EN 10088-1 (X6CrNiMoTi17-12-2)	16.5-18.5	10.5-13.5	2.0-2.5	≤ 0.08

Rubber Materials

In order to obtain the longest possible lifetime for rubber seals it is essential to choose the right quality for the actual duty. Consequently when choosing rubber quality, the characteristics of the different rubber types should be considered. All product wetted rubber material are in conformity of FDA.

EPDM Rubber (Ethylene Propylene)

EPDM rubber is widely used within the food industry as it is resistant to most products used in this sector. Another advantage is that it may be used to a recommend max. temperatures of 140°C (244°F). However, there is one essential limitation, EPDM is not resistant to organic and non-organic oils and fats. The resistance to ozone is excellent.

Acrylonitrile Butadiene Rubber, NBR

NBR is the rubber type most frequently used for technical purposes. It is quite resistant to most hydrocarbons, e.g oil, grease and fat. It is sufficiently resistant to diluted lye and nitric acid and may be used to a recommend max. 95°C (203°F). As NBR is attacked by ozone it may not be exposed to ultraviolet rays and should thus consequently be stored so that this is avoided.

Silicone Rubber, Q

The most significant quality of silicone rubber is that it can be applied from temperatures below -50°C (-58°F) to approx. + 180°C (356°F) and still keep its elasticity. The chemical resistance is satisfactory to most products. However, undiluted lye and acids as well as hot water and steam may destroy silicone rubber. The resistance to ozone is good.

Fluorine Rubber, FPM

FPM is often used when other rubber types are unsuited, especially at high temperatures up to approx. 180°C (356°F). The chemical resistance is good to most products, however hot water, steam, lye, acid and alcohol should be avoided. The resistance to ozone is good.

Hydrogenated acrylonitrileButadiene Rubber, HNBR

Mechanically strong and normally resistant to ozone and strong oxidizers, animal and vegetable fats, nonpolar solvents, oils and lubricants, water and aqueous solutions. The recommend max. temperature is 130°C (266°F).

Perfluoroalkoxy polymer, PFA

PFA is very similar to PTFE, but opposite to those PFA is thermo plastic and has minimal porosity. PFA has a very high mechanical strength which makes it a perfect choice when dealing with abrasive products. The PFA seal offers longer service intervals. The recommend max. temperature for the PFA seal is 90°C (194°F).

Product and chemical resistance of flexible rubber materials

The information below is intended as an aid in selecting the best rubber quality for an actual application. It is not possible to state any general lifetime of rubber seals as many factors influence it: chemical attack, temperature, mechanical wear etc. Extreme temperatures, even within the generally accepted limits, may worsen other kinds of attack and thus reduce the lifetime.

Ratings

- 1 = Unsuitable.
- 2 = Limited suitability.
- 3 = Normal suitability.
- 4 = High suitability.
- = Not recommended for other reasons.

The table contains data which have been compiled from the results of our own tests and the recommendations of our raw material suppliers. The data should be considered as recommendations only and will be brought up-to-date from time to time. They are based on constant contact with the specified product.

In case of doubt or lack of information it would be advisable to consult us directly, which will enable us to investigate specific applications.

Product or process	NBR ¹⁾	HNBR ²⁾	EPDM ³⁾	Q ⁴⁾	FPM ⁵⁾	PTFE ⁶⁾
Dairy products (milk, cream)	3	3-4	3-4	3-4	-	3-4
Dairy products (sour milk products)	3	3-4	3-4	3-4	-	3-4
Brewery products (beer, hops etc.)	3	3-4	3-4	1-2	2-3	3-4
Wine and yeast	3	3-4	4	4	2-3	3-4
Animal and vegetable fats	100°C	3	4	1-2	3	4
Water and water solutions	< 70°C	3	4	4	3	2-4
Hot water and steam	< 130°C	1	4	4	2	-
Concentrated fruit juices and etheral oils	< 100°C	1	-	1	1	3
Non-oxydising acids	< 80°C	1-2	2	3	1-2	2
Oxydising acids	< 80°C	-	2	3	1	2
Weak concentrate of lye	< 100°C	2	3-4	4	2	2
Strong concentrate of lye	< 100°C	1	2-3	3	1	1
Mineral oils	< 110°C	3	4	-	-	4
Aliphatic carburetted hydrogen (hexane)	3	3	1	1	4	3-4
Aromatic carburetted hydrogen (benzole)	1	2	1	1	3	3-4
Alcohols	1-3	2-3	2-3	3-4	3-4	3-4
Ester and ketones	1-2	1-2	1-2	1-2	3-4	3-4
Ether	1	2	1	1-3	3-4	3-4
Methylene chloride	1	2	1	2-3	3-4	3-4
Ozyne and atmospheric conditions	1-2	3	4	4	3-4	3-4

International designation of flexible rubber materials according to ISO R 1629.

ISO = International standard.

Notes

	Designation of flexible rubber materials	Abbreviation symbol
1)	Nitrile rubber	N
2)	Hydrogenated actylonitrile rubber	H
3)	Ethylene propylene rubber	E
4)	Silicone rubber	Q
5)	Fluorinated rubber	F
6)	Polytetraflour ethylene	

Technical Information

Compliance and certification

We can provide documented and certified compliance with a broad spectrum of relevant international and local hygiene standards, worldwide. This helps you Significantly reduce the engineering costs of setting up and operating standards-compliant processing plants around the world.

For special requests please contact your local Alfa Laval organisation



Authorized to carry the 3A symbol

The mission of 3-A SSI is to enhance product safety for consumers of food, beverages, and pharmaceutical products through the development and use of 3-A Sanitary Standards and 3-A Accepted Practices. The 3-A Symbol is a registered mark used to identify equipment that meets 3-A Sanitary Standards for design and fabrication.



ATEX is based on the requirement of the European Directive 94/9/EC (also known as ATEX 95 (100a)), the Equipment Directive. The name ATEX (ATmospheres EXplosible) is commonly given to the framework for controlling explosive atmospheres and the standards of equipment and protective systems used in them



The European Hygienic Engineering & Design Group (EHEDG) is a consortium of equipment manufacturers, food industries, research institutes as well as public health authorities and was founded in 1989 with the aim to promote hygiene during the processing and packing of food products.

EHEDG has authorised the use of the EHEDG Certification logo for Alfa Laval equipment complying with the EHEDG hygienic design criteria. The Certification include cleanability testing of equipment according to the methodology described in EHEDG guidelines.



All valves are delivered with Alfa Laval Q-doc including:

- 3.1 certificate in accordance to EN 10204
- FDA compliance and USP Class VI declaration
- TSE statement
- Surface finish declaration (Ra)
- Manufacturing and quality



CE marking is a mandatory conformity mark for products placed on the market in the European Economic Area (EEA). With the CE marking on a product the manufacturer ensures that the product conforms with the essential requirements of the applicable EC directives. The letters "CE" stand for "Conformité Européenne" ("European Conformity").

1. Strainers

Alfa Laval Strainers and filters have a wide range of applications within process filtering, especially where strainers of hygienic design are required. They are used remove coarse, medium or fine particles from a process fluid. They are ideal for a dairy, food, beverage, pharmaceutical and cosmetics industries.



Strainers 1.1

This page is intentionally left blank

1.1 Strainers

Protect your membranes with an upstream safety filter. Stabilize the temperature with a multi tube heat exchanger and control valve. Set the system pressure with the pressure regulating valves. Obtain a hygienic line - install the spiral membrane elements in hygienic housings. Alfa Laval supplies it all to match.

Product leaflets

LKSF	1.1.10
LKVF	1.1.14
Alfa Laval LKIF in-line filter	1.1.17
Mainstream® Filter/Strainer	1.1.20
Streamline™ In-Line Filter/Strainer	1.1.24

Description codes

Mainstream® Filter/Strainer	1.1.28
Streamline™ In-Line Filter/Strainer	1.1.29

Ordering leaflets

LKSF-CL Slot Strainers	1.1.30
LKSF-BL Slot Strainers	1.1.32
LKVF Coarse Strainers	1.1.34
LKVF Coarse Strainer Battery	1.1.37
LKIF In-line Filter	1.1.38
Mainstream® Filters / Strainers	1.1.39
Streamline™ Filters/Strainers	1.1.45

Alfa Laval LKSF

Filters and strainers

Introduction

The Alfa Laval LKSF Slot Strainer is a filter which separates solid matter from liquid that flows through it. The impurities are stopped by the filter element. When the filter is full of particles, it can be cleaned by removing the clamp and pulling out the filter element.

Application

The LKSF Slot Strainer is designed to fulfil basic filtration duties in hygienic applications across the dairy, food, beverage and brewery industries to protect equipment and product.

Benefits

- Fine filtration
- Easy to install
- Easy to clean
- High durability
- Flexible filter element selection

Standard design

The LKSF Slot Strainer consist of a housing in which the strainer element is fitted centred. There are two types of LKSF Slot Strainers: the LKSF-BL with housing in two parts and the LKSF-CL with housing in three parts for vertical installation.

To allow for quick dismantling for cleaning, the housing is assembled by means of clamps. The upper clamp ring has a wing nut for manual operation. The strainer element has direct access to the end cover with welded handle to facilitate dismantling when cleaning is required.

The strainer element is available from 0.0021 in. to 0.157 in. Various male parts are also available to attach the strainer to a process line.

Working principle

Type LKSF-BL: The product enters from the bottom. The filter element captures impurities. When the filter is full of particles, it can be cleaned by removing the clamp and pulling out the filter element. It is also possible to reverse the flow and flush out the impurities (backflush).

Type LKSF-CL: The product enters the filter from the side. Most of the impurities collect at the bottom and can be manually emptied during operation via a valve. Automatic discharge is also possible using two remote controlled valves at B. The upper valve is open during operation and the lower is closed. The impurities will collect between the two valves. Closing the upper valve and opening the lower one will empty the impurities with minimal product loss.

The filter can be cleaned as LKSF-BL. The degree of filtering can be altered by changing filter element. Strainer type LKSF-CL must always be installed vertically. The filtration degree may be immediately adjusted by changing the strainer element.

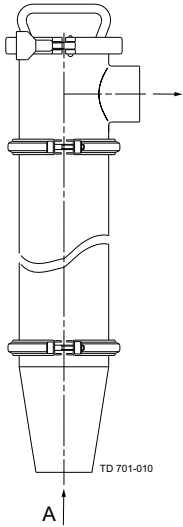


TECHNICAL DATA

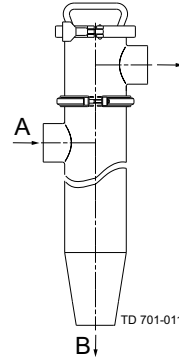
Pressure	
Max. working pressure. (68°F):	145 psi (10 bar)
Temperature	
Temperature range:	14 to +284°F (EPDM)
Strainer area: 170.5 in ²	
Max. Δp in flow direction:	145 psi (10 bar)
Capacity:	2642-31701 gallon/h (water) at $\Delta p = 14.5$ psi

Separate pressure drop/capacity diagrams are available on request.

Type LKSF-BL



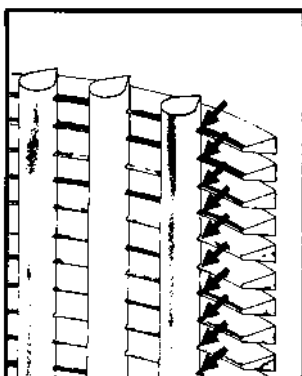
Type LKSF-CL



PHYSICAL DATA

Materials	
Product wetted steel parts:	AISI 316
Other steel parts:	AISI 304
Seals:	EPDM rubber
Surface finish:	Semi bright

The LKSF strainer element is welded at every intersection of vertical rod and surface wire



Ordering

When ordering please specify strainer element, type of male part and position. (See: Connection position).

Strainer elements - available slot sizes

Standard		Option	
74 μm	53 μm	595 μm	
105 μm	63 μm	841 μm	
177 μm	88 μm	1190 μm	
500 μm	125 μm	1410 μm	
707 μm	149 μm	1680 μm	
1000 μm	210 μm	2380 μm	
2000 μm	250 μm	2830 μm	
	297 μm	3360 μm	
	354 μm	4000 μm	
	420 μm		

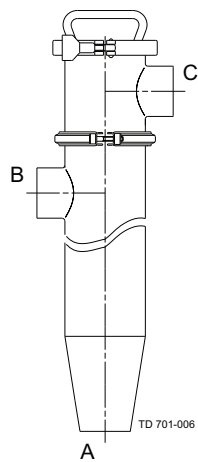
Separate pressure drop/capacity diagrams are available on request.

Additional length mm - for male parts (both types)

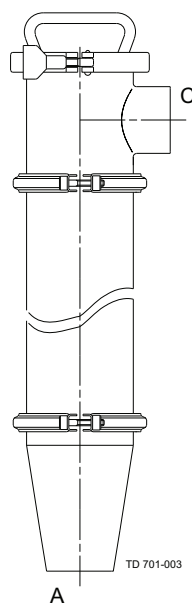
Size	1 in	1.5 in	2 in	2.5 in	3 in	4 in
DS	0.73	0.79	0.79	0.94	0.94	0.94
SMS	0.59	0.79	0.79	0.94	0.94	1.38
IDF	0.85	0.85	0.85	0.85	0.85	0.85
BS	0.87	0.87	0.87	0.89	0.87	1.06
Clamp	0.85	0.85	0.85	0.85	0.85	0.85
DIN	0.87	0.87	0.87	0.98	1.18	1.18

Separate pressure drop/capacity diagrams are available on request.

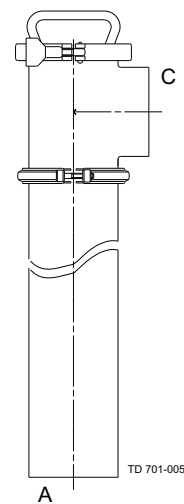
Connection Position



a. LKSF-CL



b. LKSF-BL
(1-3")

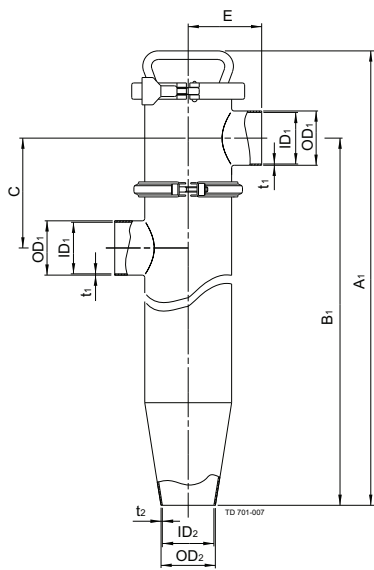


c. LKSF-BL
(4")

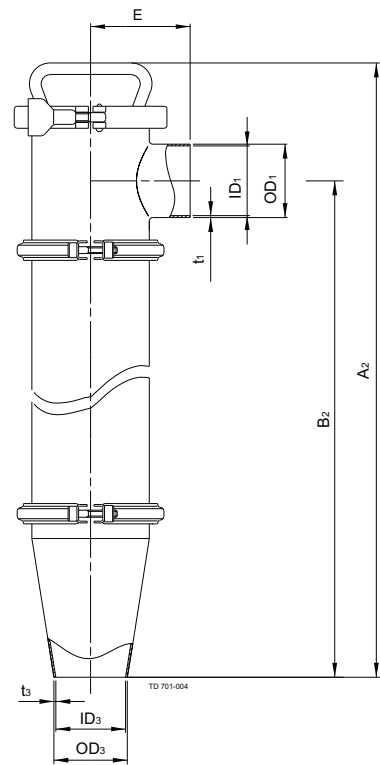
Dimensions (inch)

Size	1 in	1.5 in	2 in	2.5 in	3 in	4 in
A1	28.62	28.62	28.62	28.62	28.62	32.28
A2	33.54	31.81	30.16	28.62	27.09	27.28
B1	24.90	24.90	24.9	24.90	24.9	27.76
B2	29.76	28.03	26.38	24.84	23.31	22.95
C	5.12	5.12	5.12	5.12	5.12	5.91
OD ₁	1.00	1.50	2.00	2.50	3.00	4.00
ID ₁	0.87	1.37	1.87	2.37	2.87	3.84
t ₁	0.06	0.06	0.06	0.06	0.06	0.08
OD ₂	2.50	2.50	2.50	2.50	2.50	2.50
ID ₂	2.37	2.37	2.37	2.38	2.37	2.37
t ₂	0.06	0.06	0.06	0.06	0.06	0.06
OD ₃	0.98	1.50	2.01	1.44	3.00	4.00
ID ₃	0.89	1.40	1.88	2.37	2.84	3.84
t ₃	0.05	0.05	0.06	0.06	0.08	0.08
E	3.39	3.39	3.39	3.39	3.39	3.39
Weight (kg)	0.34	0.36	0.35	0.33	0.35	0.37

Separate pressure drop/capacity diagrams are available on request.



a. LKSF-CL



b. LKSF-BL

Alfa Laval LKVF

Filters and strainers

Introduction

The Alfa Laval LKVF Coarse Strainer is a type of filter used to remove coarse particles from liquids from 0.039 to 0.118 in.

Application

The Alfa Laval LKVF Coarse Strainer is designed to remove coarse particles from the liquid flow to protect pumps or other sensitive equipment from damage. It is used on a wide range of applications across the dairy, food, beverage and brewery industries.

Benefits

- Safeguards membrane filtration, pumps and other equipment from damage
- Easy to install and clean
- High durability
- Flexible filter element selection

Standard design

The LKVF Coarse Strainer consists of a housing with inlet and outlet. Inside the housing, the filter element is fixed to allow the flow to be forced through it. This element consists of a perforated tube which is welded to a flange with a handle. This flange fits a ferrule on the casing to which it is clamped.

Working principle

The recommended flow direction is to allow the liquid to enter the inlet (A). The particles strained collect inside the filter element which facilitates cleaning, especially if the handle points downwards or if the strainer is installed in a horizontal position. The liquid leaves the strainer through the side outlet (B).

However, it is possible to allow the liquid to enter the inlet (B) since the perforated tube is designed to withstand the pressure drop in both flow directions. The liquid leaves the strainer through the outlet (A). If side connection (B) is used as the inlet, then the maximum product pressure is 101.5 psi.



TECHNICAL DATA

Pressure	
Max. product pressure (A=inlet):	145 psi (10 bar)
Max. product pressure (B=inlet):	101.5 psi (7 bar)
Min. product pressure:	Full vacuum

Temperature	
Temperature range:	14°F to 284°F (EPDM)

Strainer area	
1"-1.5"-2"	66.7 in ²
2.5"-3":	130.2 in ²

PHYSICAL DATA

Materials	
Product wetted steel parts:	Acid-resistant steel AISI 316
Other steel parts:	Stainless steel AISI 304
Seals:	EPDM rubber
Surface finish:	Semi bright
Material grades	Seal of nitrile (NBR) or PTFE

Sizes	
1", 1.5", 2", 2.5" and 3".	

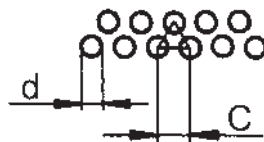
Strainer element perforation (inch)

d in	C in	Perforation
0.04	0.08	23%
0.08	0.14	30%
0.12	0.20	33%

Separate pressure drop/capacity diagrams are available on request.

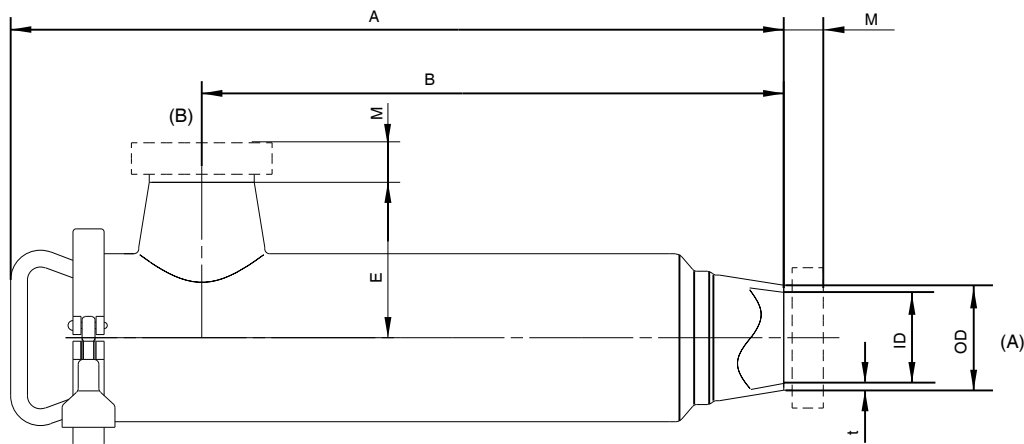


Filter element.

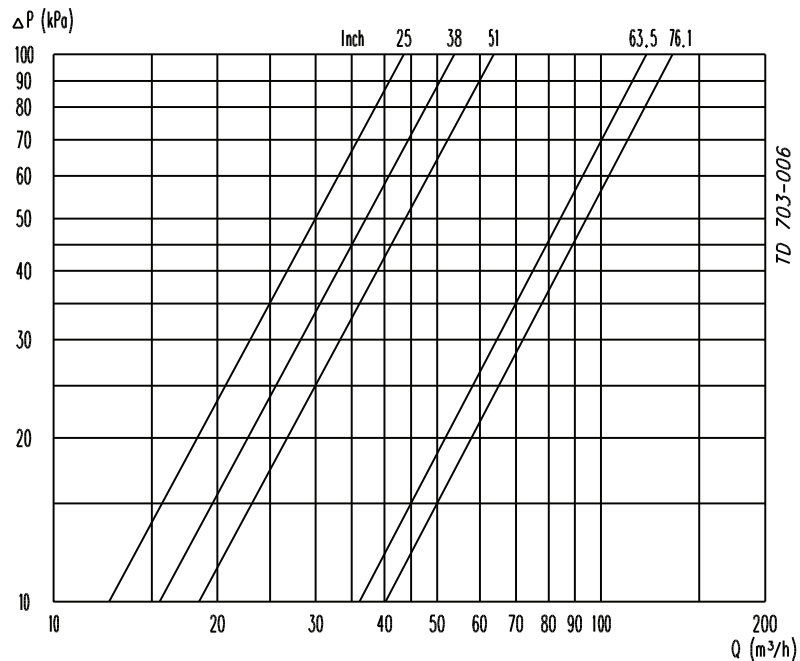


Dimensions (inch)

Size	1 in	1.5 in	2 in	2.5 in	3 in
A	16.50	14.76	13.11	18.11	16.57
B	11.34	9.61	7.95	13.86	12.32
OD	0.98	1.50	2.01	2.50	3.00
ID	0.89	1.40	1.92	2.37	2.84
t	0.05	0.05	0.04	0.06	0.08
E	4.76	3.03	3.03	3.70	3.70
M/DS male	0.73	0.79	0.79	0.94	0.94
M/SMS male	0.59	0.79	0.79	0.94	0.94
M/ISO male	0.85	0.85	0.85	0.85	0.85
M/BS male	0.87	0.87	0.87	0.87	0.87
M/DIN male	0.87	0.87	0.87	0.98	1.18
M/ISO clamp	0.85	0.85	0.85	0.85	0.85
Weight (lb)	3.31	3.31	3.31	8.16	8.16



Pressure drop / capacity diagram



LKVF with $\varnothing 0.079$ in holes in filter element. Medium: water (68°F).

Ordering

Please state the following when ordering:

- Size
- Connections if not welding ends
- Size of holes in straining element, 0.039, 0.079 or 0.12 in
- Options

Alfa Laval LKIF in-line filter

Filters and strainers

Introduction

The Alfa Laval LKIF In-Line Filter is an in-line filter intended for use in process lines in hygienic applications. It provides a safe and economic method to remove particles from liquids in process flows. The filter can easily be removed for cleaning.

Application

The LKIF In-Line Filter is designed to remove particles and other impurities from product flows and to protect pumps and other sensitive equipment across the dairy, food, beverage, brewery, chemical and pharmaceutical industries.

Benefits

- Hygienic filtration
- Safe and economic method for removal of impurities
- Helps extend product shelf life
- Easy to clean

Standard design

The LKIF In-Line Filter consists of a perforated filter element with filter ring and seal rings. Optional clamp rings, clamp seal rings, and clamp liner, or DS and SMS unions are available.

Working principle

The Alfa Laval LKIF In-Line Filter is installed in process lines and removes particles and impurities as the product flows through the lines. Particles accumulate inside the filter, which can easily be removed for cleaning. If required, the liquid can flow in the opposite direction.



TECHNICAL DATA

Temperature	
Min. temperature:	14°F to 284°F (EPDM)
Pressure	
Max. product pressure:	145 psi (10 bar)
Min. product pressure:	Full vacuum
Sizes	
25 mm (1"), 38 mm (1 1/2"), 51 mm (2"), 63.5 mm (2 1/2"), 76.1 mm (3"), and 101.6 mm (4"). 1000 kPa (10 bar)	

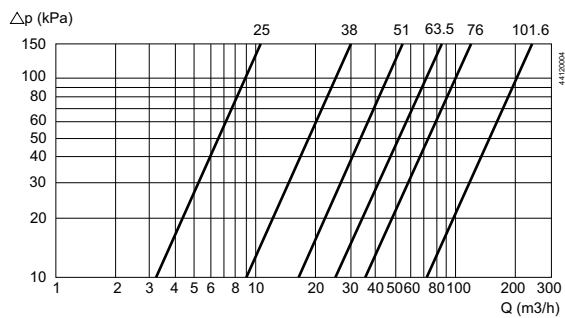
PHYSICAL DATA

Materials	
All wetted parts:	Acid-resistant steel AISI 316
Other steel parts:	Stainless steel AISI 304
Seals:	EPDM rubber
Other seals:	Nitrile (NBR) and PTFE, if clamps
Finish:	Semi bright

Ordering

Please state the following when ordering: - Size. - Male type.

Pressure drop/capacity diagram



NOTE!

For the diagram the following applies: Medium: Water (200C). Measurement: In accordance with VDI 2173.

Filter element perforation (inch)

Perforation: 40.2 %

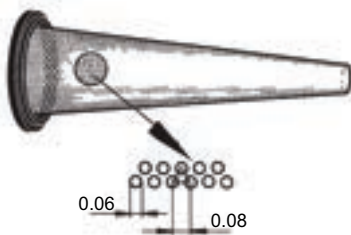
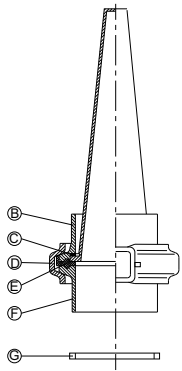


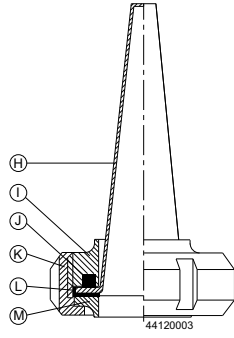
Fig. 4. Filter element.

Dimensions (inch)

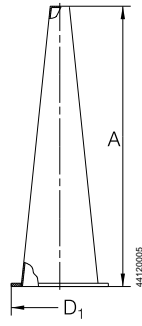
Size	1"	1½"	2"	2½"	3"	4"
A	2.95	4.49	6.65	8.46	8.86	9.84
D1	1.22	1.57	2.09	2.64	3.15	4.19
D2	1.32	2.05	2.48	3.07	3.58	4.80
» Strainer area apprx. (inch ²)	6.82	13.02	25.11	40.46	51.61	78.43
M/DS male	0.73	0.79	0.79	0.94	0.94	0.94
M/SMS male	0.59	0.79	0.79	0.94	0.94	1.38
M/ISO clamp	0.85	0.85	0.85	0.85	0.85	0.85
Weight (lb)	0.06	0.13	0.22	0.33	0.43	0.66



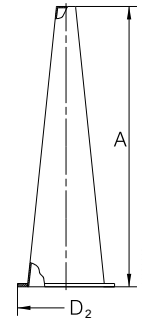
a. Clamp ends
Fig. 3. Parts lists drawings.



b. DS and SMS unions.



a. Clamp ends
Fig. 5. Dimensions.



b. DS and SMS unions.

Parts List

- A. Filter with ring.
- B. Clamp-liner welded.
- C. Seal ring.
- D. Clamp ring.
- E. Clamp seal ring.
- F. Clamp-liner welded.
- G. Replacement ring.

- H. Filter with ring.
- I. Male part welded.
- J. Seal ring.
- K. Union nut.
- L. Special seal ring.
- M. Liner welded.

Alfa Laval Mainstream® Filter/Strainer

Strainers

Introduction

The Alfa Laval Mainstream® Filter/Strainer removes particles from process streams with high flow rates, ensuring product quality and hygiene as well as protecting equipment from clogging, fouling and corrosion. This reduces the risk of unplanned downtime and prolongs equipment maintenance intervals.

Versatile and cost-effective, this basket-style filter/strainer with its free-flow design and side-entry ports features a large surface area and side-entry port to handle high flow rates with minimal pressure drop. It is also able to handle a wide range of disposable filter and reusable strainer media, providing maximum application flexibility.

Application

The Mainstream® Filter/Strainer is designed to remove particles from process streams thereby promoting product quality and hygiene, while protecting processing equipment. It is widely used across the dairy, food, beverage, meat and poultry, personal care, and pharmaceutical industries.

Benefits

- Faster throughput and more efficient particle removal
- Hygienic, corrosion-resistant construction
- Quick, easy disposal of particles inside the basket or bag
- Reduced media changeover due to large filtration surface area

Standard Design

The Mainstream Filter/Strainer consists of stainless steel side-entry housing and filter/strainer basket with free-flow design that can accommodate a wide range of filter and strainer media.

For filtration applications, the unit incorporates a perforated stainless steel basket designed to hold disposable filter bags. It is possible to achieve fine filtration for removal of particles down to 0.5 micron in size. For strainer applications, the unit can be fitted with a Vee-Wire® baskets or basket made of perforated metal. Two model sizes – short model (1.7 sq. ft.) and long model (3.8 sq. ft.) – are available to accommodate a wide range of capacities.

To ensure safe operation, the filter/strainer comes with a standard pressure relief cover with manual valve and drain elbow assembly.

The inside-outflow prevents basket damage and, the unique handle with lock design for positive O-ring sealing prevents bypass and improves efficiency (US Patent No 4,775,469).



Working principle

With their large surface area, Mainstream® filters and strainers combine high flow rates, low pressure drop, and simple cleanup and servicing. High capacity and long filter cycles mean Mainstream® filters and strainers need significantly less servicing — all particles are contained inside the basket (or bag) for quick, easy disposal. The Mainstream® housing stays in the processing line; only the basket is removed during change-over. The end result for you is more efficient separation, faster throughput, and reduced media change over due to the larger surface area of the Mainstream®.

Cleaning

The Mainstream® housing is approved for CIP (cleaned in place). All internal components must be removed for COP (Cleaned out of place). Refer to Filter/Strainer instruction manual for complete cleaning instructions.

Warning: Reverse flow or back flushing can result in damage to the internal components.

TECHNICAL DATA

Materials

Product wetted steel parts:	AISI 316L Stainless Steel
Other steel parts:	AISI 304 Stainless Steel
Finish:	32 μ -inch (0.8 mm) Ra on product contact surfaces
Product wetted seals:	Buna, EPDM, SFY (Fluorelastomer)
Other:	SEF cam lock - UHMW, Relief valve handle - UHMW

OPERATING DATA

Nominal Temperature and Pressure Ratings

Buna N gaskets effective up to	200°F
--------------------------------	-------

Maximum working pressure

At 70°F, Buna N's	200 psi
At 190°F, Buna N's	80 psi

Gaskets

Steam Resistant Fluorelastomer/Silicone gaskets are effective up to	350°F.
---	--------

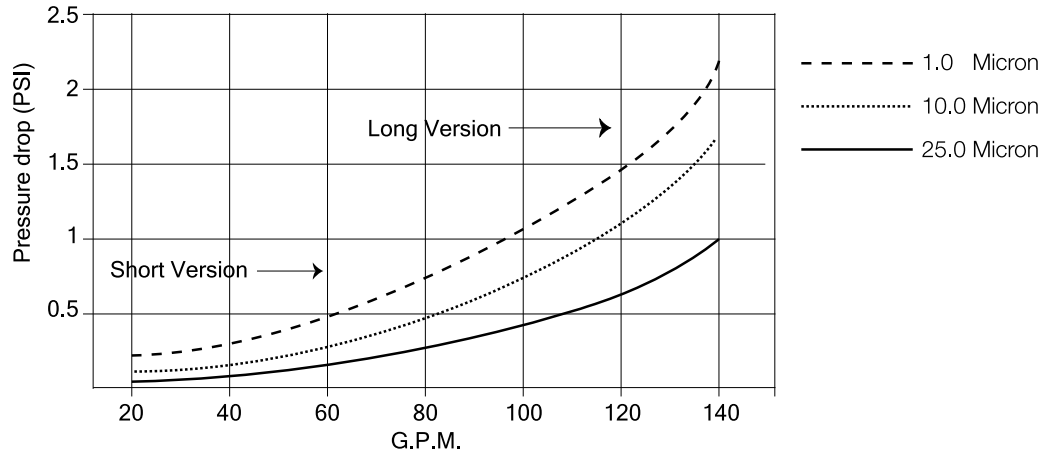
Maximum working pressure

At 70°F, Fluorelastomer/Silicone's	200 psi.
At 350°F, Fluorelastomer/Silicone's	50 psi.

Maximum Pressure Differential

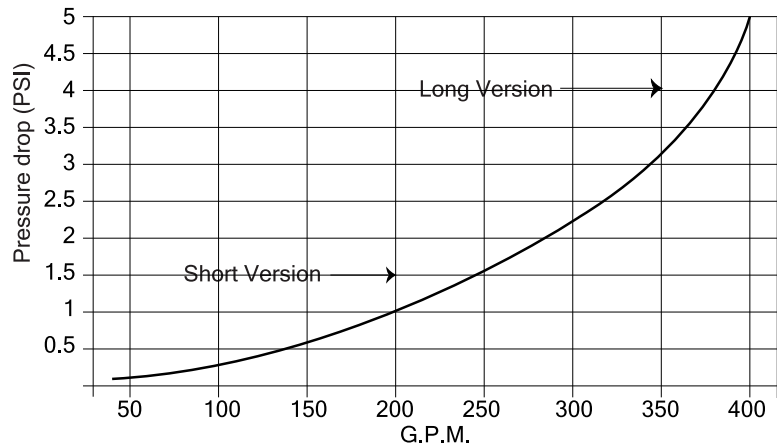
SES Strainer (perforated metal)	50 psi.
SEF Filters	10 psi or application dependent.
SEB Single Coarse Strainer	100 psi.
SEBHVW Vee-Wire® Strainer	See charts below.

Filter Pressure Drop Curves / Mainstream Filters Model 1 and 2



Curve is based on water*. Max. flows for LONG and SHORT units shown. Curve is typical for listed micron ratings.

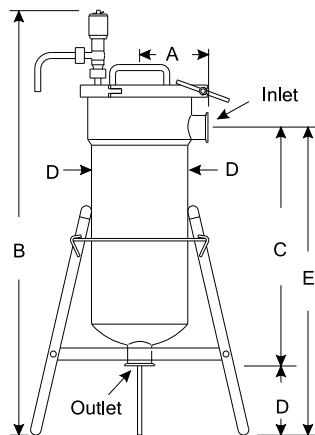
Strainer Pressure Drop Curves / Mainstream Strainers Model 1 and 2



Curve is based on water*. Max. flows for LONG and SHORT units shown. Curve is typical for all size perforations.

* Contact AL for higher flows and non-water application recommendations.

Dimensions



Note: Mainstream filter/strainer stand optional. Order separately.

Model	Inlet / Outlet Diameter	Dimensions for Tri-Clamp®				
		A	B	C	D	E
Model 1 (Short)	2"	5 ¹¹ / ₁₆	35 ³ / ₈	19 ¼	8	27 ¼
	3"	5 ¹¹ / ₁₆	35 ³ / ₈	19 ¾	8	27 ¾
	4"	6 ⁵ / ₁₆	35 ³ / ₈	20 ¼	8	28 ¼
Model 2 (Long)	2"	5 ¹¹ / ₁₆	51 ³ / ₈	35 ¼	8	43 ¼
	3"	5 ¹¹ / ₁₆	51 ³ / ₈	35 ¾	8	43 ¾
	4"	6 ⁵ / ₁₆	51 ³ / ₈	36 ¼	8	44 ¼

Effective filter area

Short	1.7 ft.2
Long	3.8 ft.2

Filter Media (for SEF Filter) Product Compatibility and Temperature

Media Code	Fiber	Maximum Temperature	Product Compatibility and Temperature				
			Inorganic Acid	Organic Acid	Alkali	Vegetable Oils	Organic Solvents
PPR (Standard)	Polypropylene	200F	•		•	•	•
PES (Standard)	Polyester	300F	•	•	•	•	•
NY	Nylon	250F	•		•	•	•
NMO	Nylon Monofilament	250F	•		•	•	•

* Micron ratings available from 0.5 to 800 micron. Not all filter materials are available in all micron choices - Contact AL.

Strainer Media Selection. Vee-Wire® (SEBHW Strainer)

Code	Space Between	Pressure Differential	Micron Equivalent
A	.005	100	127
B	.0075	100	190
C	.010	85	254
D	.015	85	381
E	.020	70	508
F	.025	70	635
G	.030	55	762
H	.035	55	889

Vee-Wire® is a registered trademark of US Filter

Mainstream units with filters, V-wire, or perforated metal strainers are authorized to carry the 3A symbol

Perforated Material

Code	Description	Micron Rating	% of Open area
A (SES)	.033 dia./24 ga.	838	20.0
C (SES)	.062 dia./22 ga.	1590	30.0
D (SEB)	.09375 dia./18 ga.	---	33.0
E (SEB)	.125 dia./18 ga.	---	40.0
G (SEB)	.250 dia./18 ga.	---	58.0

Options**Equipment**

- A. Mainstream® floor stand
- B. Wall mounting bracket
- C. Aluminum Bronze (BR) Relief Valve Handle
- D. Aluminum Bronze (BR) Cam lock on SEF
- E. Alternative connections (Tri-Clamp® standard)

Ordering

Please state the following when ordering:

- SES, SEF, SEB, SEBHW
- Short unit or long unit
- Port connection size
- Elastomers
- Micron or perforation size of Filter or Strainer
- Options

Alfa Laval Streamline™ In-Line Filter/Strainer

Strainers

Introduction

The Alfa Laval Streamline™ In-Line Filter/Strainer removes particles from process streams, ensuring product quality and hygiene as well as protecting equipment from clogging, fouling and corrosion. This reduces the risk of unplanned downtime and prolongs equipment maintenance intervals.

Versatile and cost-effective, this filter/strainer with its free-flow design is able to handle a wide range of disposable filter and reusable strainer media, providing maximum application flexibility.

Application

The Streamline™ In-Line Filter/Strainer is designed to remove particles from process streams thereby promoting product quality and hygiene, while protecting processing equipment, such as homogenizers, meters, spray nozzles, needle valves, and pumps. It is widely used across the dairy, food, beverage, meat and poultry, personal care, and pharmaceutical industries.

Benefits

- Promotes product quality and hygiene
- Protects processing equipment
- Hygienic, lightweight and corrosion-resistant construction
- Easy to maintain without removing from the process line
- Approved for use in plants that produce meat, poultry, and/or egg products regulated by USDA Food Safety and Inspection Service

Standard Design

The Streamline™ In-Line Filter/Strainer consists of AISI 316 stainless steel housing, filter or perforated metal single screen or overscreen strainer, pullout top (similar to Mainstream® design), and clamp connections. Available in two lengths to provide optimum filtration area for the application and/or with inlet positioned on the side of the unit.

The Streamline™ In-Line Filter version can be supplied with one of five filtering media, down to 40 microns, including woven and non-woven polypropylene and polyester materials and nylon mesh. The Streamline™ In-Line Strainer version can be furnished with a single-perforated screen for removing large particles, or with a backup tube and overscreen with small perforations for removing fine particles.

Working principle

The Streamline™ filters and strainers are designed to promote product quality and sanitation, while protecting processing equipment such as homogenizers, meters, spray nozzles, needle valves, and pumps.



Cleaning

The Streamline™ housing is approved for CIP (cleaned in place). All internal components must be removed for COP (Cleaned out of place). Refer to Filter/Strainer instruction manual for complete cleaning instructions.

Warning: Reverse flow or back flushing can result in damage to the internal components.

TECHNICAL DATA

Temperature	
Temperature range	250°F max
(with fluorelastomer gaskets)	
Pressure	
Pressure range at 70°F	300 PSI
Pressure range at 210°F	180 PSI
Maximum Differential Pressure	
Single strainer:	- 50 PSI
Overscreen:	- 25 PSI
Filter:	- 15 PSI

PHYSICAL DATA

Materials	
Product wetted steel parts:	AISI 316/316L Stainless Steel
Other steel parts	AISI 304 Stainless Steel
Finish on product contact surfaces	Ra 32 μ-inch (0.8mm)
Product wetted seals	Buna, SFY (fluorelastomer)



Fine or Medium Strainer

Complete with a backup tube and overscreen with small perforations for removing finer particles (838 to 1590 microns).



Coarse Strainer

Furnished with a single perforated screen for straining large particles.

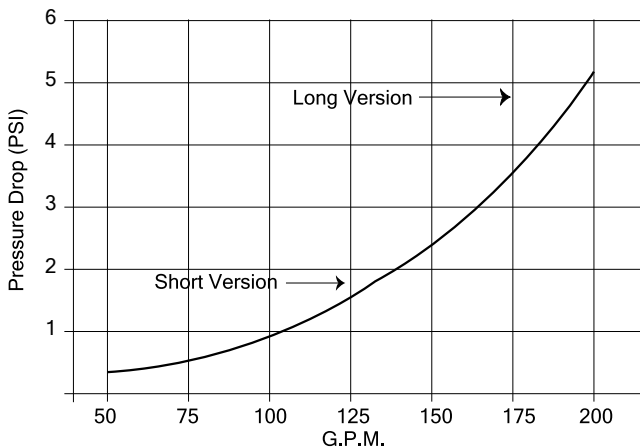


Filtration

Streamline filters can be furnished with any one of five filtering media, down to 40 microns, including woven and non-woven polypropylene and polyester materials and nylon mesh.

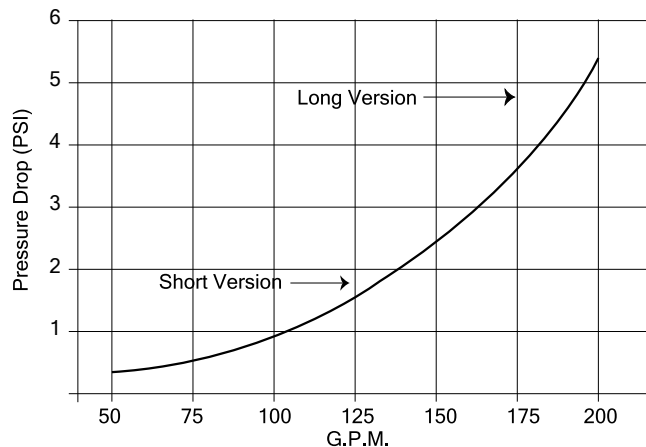
Pressure Drop Curves

Filter Pressure Drop Curves.
Streamline Filters Model 1 and 2



Curve is based on water.*.
Max. flows for LONG and SHORT units shown.
Curve is typical for all filter socks.

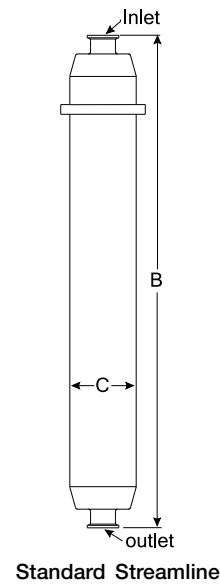
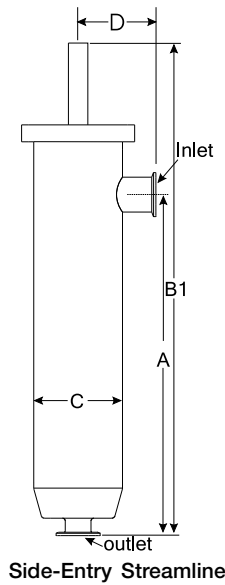
Strainer Pressure Drop Curves.
Streamline Strainers Model 1 and 2



Curve is based on water.*.
Max. flows for LONG and SHORT units shown.
Curve is typical for all perforations.

* Contact AL for sizing of non-water applications.

Dimensions (inches)



Streamline

Connection Size	Tri-Clamp® Connections				Outer Assembly Diameter (in.) C	Effective Filter Area (ft. ²)
	Length (in.) A	Length (in.) B	Length (in.) B1	Length (in.) D		
Short	1	15 ³ / ₈	15 ³ / ₄	22 ¹ / ₄	3 ¹ / ₂	0.65
	1½	15 ³ / ₈	15 ³ / ₄	22 ¹ / ₄	3 ¹ / ₂	0.65
	2	15 ³ / ₈	15 ³ / ₄	22 ¹ / ₄	3 ¹ / ₂	0.65
	2½	15 ³ / ₈	15 ³ / ₄	22 ¹ / ₄	5	0.75
	3	15 ³ / ₈	15 ³ / ₄	22 ¹ / ₄	5	0.75
Long	1½	35	35 ³ / ₈	41 ⁷ / ₈	3 ¹ / ₂	1.95
	2	35	35 ³ / ₈	41 ⁷ / ₈	3 ¹ / ₂	1.95
	2½	35	35 ³ / ₈	41 ⁷ / ₈	5	2.25
	3	35	35 ³ / ₈	41 ⁷ / ₈	5	2.25

Replacement Strainer Selection

Perforated Metal Strainer Single Screens						Perforated Metal Over Screens						
Screen Part No.	Port Connections	Gauge	Hole Diameter (in.)	Holes Per Square Inch	Percent of Open Area	Screen Part No.	Gauge	Hole Diameter (in.)	Micron Rating	Holes Per Square Inch	Percent of Open Area	
09G*	1, 1½, 2	14	1/4	.250	9	58	44A	26	.033	838	236	20
	2½, 3	12	1/4	.250	9	58	44B	26	.050	1270	132	26
09D	1, 1½, 2	16	3/32	.093	47	33	44C	26	.062	1590	97	30
09E	1, 1½, 2	14	1/8	.125	33	40	44U**	26	.040	1015	179	23
	2½, 3	12	1/8	.125	33	40						
09V	2½, 3	12	3/16	.187	18	51						

* Note: All strainers using over screens require a backup tube — the recommended type G screen will be furnished as standard backup tube in all Alfa Laval filters and strainers.

** Available only in long units.

Replacement Filter Media Schedule

Media	Micron Rating*	Description
30B	513	100% polyester multifilament
30C	300	Polypropylene and polyester
30D	765	Nylon, 26/29 mesh, rectangular opening, (.025" x .030")

30E	40 - 42	Polypropylene
30G	420	Woven nylon, 40 mesh

* Estimated

Ordering

Please state the following when ordering:

- Filter or strainer
- In-line or side-inlet
- Long or short unit
- Connection size
- Filter or strainer choice



Streamline units with filters or perforated metal strainers are authorized to carry the 3A symbol.

SEF	03	1.0	PPR	1
		①	②	③

SEF	03	0	000	0
-----	----	---	-----	---

Filter media can be supplied in micron ratings ranging from 0.5 through 800.0. When ordering filter media specify Micron Rating, Media Code No. and Model No. (1-short, 2-long). All Mainstream® filter media packaged in units of 10 pieces. Priced per ea. Sold in boxes of 10.

- ① **MICRON**
Rating Example
50.0 = 50 micron
- ② **MATERIAL**
COT - Cotton
NMO - Nylon Monofilament
NYL - Nylon
PES - Polyester
PPR - Polypropylene
RAY - Rayon
- ③ **SIZE**
1 - Short Bag
2 - Long Bag

Product Compatibility and Temperature

Media Code	Fiber	Max. Temp.	Product Compatibility and Temperature				
			Inorganic Acid	Organic Acid	Alkali	Vegetable Oils*	Organic Solvents
C	Cotton	180° F			X	X	X
PPR	Polypropylene	200° F	X		X	X	X
NY	Nylon	250° F	X		X	X	X
NMO	Nylon Monofilament	250° F	X		X	X	X
PES	Polyester	300° F	X	X	X	X	X
NOM	Nylon Nomex**	450° F				X	

*Higher for continuous operations with vegetable oil.

**Trademarks of Dupont.

S	M	S	1	1½	A	316L
1	2	3	4	5	6	7
0	0	0	0	0	0	0000

1 BASE PART NUMBER
S - Single Strainer

2 PORT CONNECTION
M - Tri-Clamp®

3 SIDE-ENTRY
S - Side-Entry Port
(Leave blank for standard port)

4 FILTER OR STRAINER MODEL
1 - short unit
2 - long unit

5 SIZE OF END CONNECTION
1 - 1" Tube OD
(25.4mm)
1½ - 1½" Tube OD
(38.1mm)
2 - 2½" Tube OD
(50.8mm)
2½ - 2½" Tube OD
(63.5mm)
3" - 3" Tube OD
(76.2mm)

6 FILTER MEDIA
B - Woven knapped cotton flannel
C - Cheese cloth
D - Nylon
G - Woven rayon
H - Polyester

Either/Or

SCREEN SELECTION

G	A	R	F	M
D	B	P	N	H
E	C	T	L	S
V	U	J	K	

For more information,
see page 15.

7 MATERIAL
316L Steel

Product code: 5617

Material: 1.4401 (316)
Seals: EPDM

Item No.	LLP USD	Size	Slot size	Dimension (mm)				Welding ends
				(in)	µm	OD ₁ /ID ₁ x t ₁	OD ₂ /ID ₂ x t ₂	
9612926601		1	74	1/0.87 x 0.06	2.5/2.37 x 0.06	28.62	24.9	
9612926602		1	105	1/0.87 x 0.06	63.5/60.3 x 1.6	28.62	24.9	
9612926603		1	177	1/0.87 x 0.06	63.5/60.3 x 1.6	28.62	24.9	
9612926604		1	500	1/0.87 x 0.06	63.5/60.3 x 1.6	28.62	24.9	
9612926605		1	707	1/0.87 x 0.06	63.5/60.3 x 1.6	28.62	24.9	
9612926606		1	1000	1/0.87 x 0.06	63.5/60.3 x 1.6	28.62	24.9	
9612926607		1	2000	1/0.87 x 0.06	63.5/60.3 x 1.6	28.62	24.9	
9612926608		1.5	74	1.5/1.37 x 0.06	2.5/2.37 x 0.06	28.62	24.9	
9612926609		1.5	105	1.5/1.37 x 0.06	2.5/2.37 x 0.06	28.62	24.9	
9612926610		1.5	177	1.5/1.37 x 0.06	2.5/2.37 x 0.06	28.62	24.9	
9612926611		1.5	500	1.5/1.37 x 0.06	2.5/2.37 x 0.06	28.62	24.9	
9612926612		1.5	707	1.5/1.37 x 0.06	2.5/2.37 x 0.06	28.62	24.9	
9612926613		1.5	1000	1.5/1.37 x 0.06	2.5/2.37 x 0.06	28.62	24.9	
9612926614		1.5	2000	1.5/1.37 x 0.06	2.5/2.37 x 0.06	28.62	24.9	
9612926615		2	74	2/1.87 x 0.06	2.5/2.37 x 0.06	28.62	24.9	
9612926616		2	105	2/1.87 x 0.06	2.5/2.37 x 0.06	28.62	24.9	
9612926617		2	177	2/1.87 x 0.06	2.5/2.37 x 0.06	28.62	24.9	
9612926618		2	500	2/1.87 x 0.06	2.5/2.37 x 0.06	28.62	24.9	
9612926619		2	707	2/1.87 x 0.06	2.5/2.37 x 0.06	28.62	24.9	
9612926620		2	1000	2/1.87 x 0.06	2.5/2.37 x 0.06	28.62	24.9	
9612926621		2	2000	2/1.87 x 0.06	2.5/2.37 x 0.06	28.62	24.9	
9612926622		2.5	74	2.5/2.37 x 0.06	2.5/2.37 x 0.06	28.62	24.9	
9612926623		2.5	105	2.5/2.37 x 0.06	2.5/2.37 x 0.06	28.62	24.9	
9612926624		2.5	177	2.5/2.37 x 0.06	2.5/2.37 x 0.06	28.62	24.9	
9612926625		2.5	500	2.5/2.37 x 0.06	2.5/2.37 x 0.06	28.62	24.9	
9612926626		2.5	707	2.5/2.37 x 0.06	2.5/2.37 x 0.06	28.62	24.9	
9612926627		2.5	1000	2.5/2.37 x 0.06	2.5/2.37 x 0.06	28.62	24.9	
9612926628		2.5	2000	2.5/2.37 x 0.06	2.5/2.37 x 0.06	28.62	24.9	

NOTE! NBR and FPM available on request.

For further information - please see PD-sheet.

Product code: 5617

Material: 1.4401 (316)
Seals: EPDM

Item No.	LLP USD	Size		Dimension (mm)					Welding ends
		(in)	µm	OD ₁ /ID ₁ x t ₁	OD ₂ /ID ₂ x t ₂	A ₁	B ₁	C	
9612926629		3	74	3/2.87 x 0.06	2.5/2.37 x 0.06	28.62	24.9		
9612926630		3	105	3/2.87 x 0.06	2.5/2.37 x 0.06	28.62	24.9		
9612926631		3	177	3/2.87 x 0.06	2.5/2.37 x 0.06	28.62	24.9		
9612926632		3	500	3/2.87 x 0.06	2.5/2.37 x 0.06	28.62	24.9		
9612926633		3	707	3/2.87 x 0.06	2.5/2.37 x 0.06	28.62	24.9		
9612926634		3	1000	3/2.87 x 0.06	2.5/2.37 x 0.06	28.62	24.9		
9612926635		3	2000	3/2.87 x 0.06	2.5/2.37 x 0.06	28.62	24.9		
9612926636		4	74	4/3.84 x 0.06	2.5/2.37 x 0.06	32.28	27.76		
9612926637		4	105	4/3.84 x 0.06	2.5/2.37 x 0.06	32.28	27.76		
9612926638		4	177	4/3.84 x 0.06	2.5/2.37 x 0.06	32.28	27.76		
9612926639		4	500	4/3.84 x 0.06	2.5/2.37 x 0.06	32.28	27.76		
9612926640		4	707	4/3.84 x 0.06	2.5/2.37 x 0.06	32.28	27.76		
9612926641		4	1000	4/3.84 x 0.06	2.5/2.37 x 0.06	32.28	27.76		
9612926642		4	2000	4/3.84 x 0.06	2.5/2.37 x 0.06	32.28	27.76		

NOTE! Other combinations on request.

Please specify filter size, slot size, sealing material and connection size.

Please contact Customer service.

Item No.	LLP USD	Size		Type	Options
		(mm)	(in)		
					Male parts
		25	1"	LKSF-CL	Please state which type of male part you want and male part positions. Please see PD-sheet for male part types and connection positions.
		38	1½"	LKSF-CL	
		51	2"	LKSF-CL	
		63.5	2.5"	LKSF-CL	
		76.1	3"	LKSF-CL	
		101.6	4"	LKSF-CL	
					Replacement of seals
		25-101.6	1"-4"	LKSF-CL	Replacement to seals of Nitrile (NBR).
		25-101.6	1"-4"	LKSF-CL	Replacement to seals of Fluorinated rubber (FPM).

Product code: 5617

Material: 1.4401 (316)
Seals: EPDM

Product code: 5617

Material: 1.4401 (316)
Seals: EPDM

Item No.	Size		Type	Options
	(mm)	(in)		
	25	1"	LKSF-BL	Please state which type of male part you want and male part positions. Please see PD-sheet for male part types and connection positions.
	38	1½"	LKSF-BL	
	51	2"	LKSF-BL	
	63.5	2½"	LKSF-BL	
	76.1	3"	LKSF-BL	
	101.6	4"	LKSF-BL	
Replacement of seals				
	25-101.6	1"-4"	LKSF-BL	Replacement to seals of Nitrile (NBR).
	25-101.6	1"-4"	LKSF-BL	Replacement to seals of Fluorinated rubber (FPM).

Product code: 5609

Material: 1.4401 (316)
Seals: EPDM
Connections: Welding ends

Item No.	LLP USD	Size	Size of hole	Dimension (in)				Welding ends
				(in)	(in)	OD/ID x t	A	
9612190120		1	0.04	1/0.89 x 0.05	16.50	11.34	4.76	
9612190121		1.5	0.04	1.5/1.4 x 0.05	14.76	9.61	3.03	
9612190122		2	0.04	2/1.92 x 0.04	13.11	7.95	3.03	
9612190123		2.5	0.04	2.5/2.37 x 0.06	18.46	13.86	3.70	
9612190124		3	0.04	3/2.84 x 0.08	16.93	12.32	3.70	
9612190125		1	0.08	1/0.89 x 0.05	16.50	11.34	4.76	
9612190126		1.5	0.08	1.5/1.4 x 0.05	14.76	9.61	3.03	
9612190127		2	0.08	2/1.92 x 0.04	13.11	7.95	3.03	
9612190128		2.5	0.08	2.5/2.37 x 0.06	18.46	13.86	3.70	
9612190129		3	0.08	3/2.84 x 0.08	16.93	12.32	3.70	
9612190130		1	0.12	1/0.89 x 0.05	16.50	11.34	4.76	
9612190131		1.5	0.12	1.5/1.4 x 0.05	14.76	9.61	3.03	
9612190132		2	0.12	2/1.92 x 0.04	13.11	7.95	3.03	
9612190133		2.5	0.12	2.5/2.37 x 0.06	18.46	13.86	3.70	
9612190134		3	0.12	3/2.84 x 0.08	16.93	12.32	3.70	

*) When ordering please specify size of strainer element.

For further information - please see product leaflet.

Product code: 5609

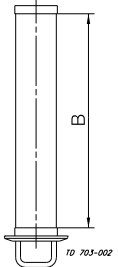
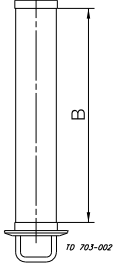
Material: 1.4401 (316)
Seals: EPDM
Connections: male parts

Item No.	LLP USD	Size	Size of hole	Dimension (in)			SMS male parts
				(in)	(in)	(in)	
9612190135		1	0.04	16.50	11.34	4.76	
9612190136		1.5	0.04	14.76	9.61	3.03	
9612190137		2	0.04	13.11	7.95	3.03	
9612190138		2.5	0.04	18.46	13.86	3.70	
9612190139		3	0.04	16.93	12.32	3.70	
							SMS male parts
9612190141		1.5	0.08	14.76	9.61	3.03	
9612190142		2	0.08	13.11	7.95	3.03	
9612190143		2.5	0.08	18.46	13.86	3.70	
9612190144		3	0.08	16.93	12.32	3.70	
							SMS male parts
9612190146		1.5	0.12	14.76	9.61	3.03	
9612190147		2	0.12	13.11	7.95	3.03	
9612190148		2.5	0.12	18.46	13.86	3.70	
9612190149		3	0.12	16.93	12.32	3.70	

*) When ordering please specify size of strainer element.

For further information - please see product leaflet.

Item No.	PPL EUR	Size		Type	Options
		(mm)	(in)		
		25	1"	LKVF	Please state which type of male part you want and male part positions. Please see product leaflet for part types and connection position
		38	1½"	LKVF	
		51	2"	LKVF	
		63.5	2½"	LKVF	
		76.1	3"	LKVF	

Item No.	LLP USD	Size of holes		Dimension		Strainer element for 25 - 51 mm (1"-2")
		(mm)	(in)	B (mm)	B (in)	
9612190601		1.0	0.039	264	10.39	
9612190602		1.5	0.059	264	10.39	
9612190603		2.0	0.079	264	10.39	
9612190604		2.5	0.098	264	10.39	
9612190605		3.0	0.118	264	10.39	
9612190607		4.0	0.157	264	10.39	
Strainer element for 63.5 - 76 mm (2½"-3")						
9612191401		1.0	0.039	353	13.90	
9612191402		1.5	0.059	353	13.90	
9612191403		2.0	0.079	353	13.90	
9612191404		2.5	0.098	353	13.90	
9612191405		3.0	0.118	353	13.90	

Item No.	LLP USD	Size		Seals
		(mm)	(in)	
		25 - 51	1"-2"	Replacement to seals of Nitrile (NBR).
		25 - 51	1"-2"	Replacement to seals of Fluorinated rubber (FPM).
		25 - 51	1"-2"	Replacement to seals of PTFE.
		63.5 - 76	2½"-3"	Replacement to seals of Nitrile (NBR).
		63.5 - 76	2½"-3"	Replacement to seals of Fluorinated rubber (FPM).
		63.5 - 76	2½"-3"	Replacement to seals of PTFE.

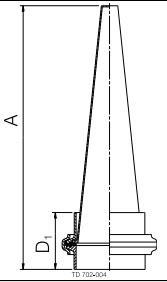
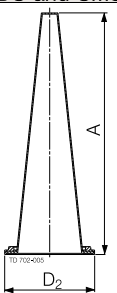
Product code: 5617

Material: 1.4401 (316)

Item No.	LLP USD	Size		Dimension					
		mm	in	mm	A		mm	B	
					in			in	
9612192110		25	0.98	529	20.83	545		21.46	
9612192111		38	1.5	515	20.28	491		19.33	
9612192112		51	2.01	497.4	19.58	520		20.47	
9612192113		63.5	2.5	679	26.73	639		25.16	
9612192114		76.1	3	650	25.59	665		26.18	

NOTE! When ordering please specify strainer element (Strainer elements - please see later this chapter).

Other combinations - on request.

Item No.	LLP USD	Size		Dimension				Clamp ends
				A		D ₁		
		mm	in	mm	in	mm	in	
9612025701		25	1	98.6	3.88	47.6	1.87	
9612025702		38	1.5	137.8	5.43	47.6	1.87	
9612025703		51	2	192.1	7.56	47.6	1.87	
9612025704		63.5	2.5	238.6	9.39	54.1	2.13	
9612025705		76.1	3	248.6	9.79	54.1	2.13	
9612025706		101.6	4	273.6	10.77	54.1	2.13	
				A		D ₂		For DS and SMS unions*
9612025801		25	1	75	2.95	33.5	1.32	
9612025802		38	1.5	114	4.49	52	2.05	
9612025803		51	2	169	6.65	63	2.48	
9612025804		63.5	2.5	215	8.46	78	3.07	
9612025805		76.1	3	225	8.86	91	3.58	
9612025806		101.6	4	250	9.84	122	4.80	

For further information - please see PD-sheet.

* Delivery without union. To be ordered separately.

Mainstream Basket Filters (SEFR)							
Part No.	Item No.	Size Conn.		Cam Lock	Cover Gasket and O-Ring	Relief Valve Handle	LLP USD
		in	mm				
Model 1 Short							
SEFR1	221043	2	50.8	1 - UHMW	1 - Buna N	1 - UHMW	
SEFR1	221044	3	76.2	1 - UHMW	1 - Buna N	1 - UHMW	
SEFR1	9634054355	4	101.6	1 - UHMW	1 - Buna N	1 - UHMW	
SEFR1	3100290	2	50.8	1 - UHMW	2 - SFY	1 - UHMW	
SEFR1	9634054073	2	50.8	1 - UHMW	3 - EPDM	1 - UHMW	
SEFR1	9634051682	3	76.2	1 - UHMW	2 - SFY	1 - UHMW	
SEFR1	9634051710	3	76.2	1 - UHMW	3 - EPDM	1 - UHMW	
SEFR1	Contact AL	4	101.6	1 - UHMW	2 - SFY	1 - UHMW	
SEFR1	Contact AL	4	101.6	1 - UHMW	3 - EPDM	1 - UHMW	
SEFR1	220318	2	50.8	2 - Bronze	2 - SFY	1 - UHMW	
SEFR1	Contact AL	2	50.8	2 - Bronze	3 - EPDM	1 - UHMW	
SEFR1	225262	3	76.2	2 - Bronze	2 - SFY	1 - UHMW	
SEFR1	Contact AL	3	76.2	2 - Bronze	3 - EPDM	1 - UHMW	
SEFR1	Contact AL	4	101.6	2 - Bronze	2 - SFY	1 - UHMW	
SEFR1	Contact AL	4	101.6	2 - Bronze	3 - EPDM	1 - UHMW	
Model 2 Long							
SEFR2	221047	2	50.8	1 - UHMW	1 - Buna N	1 - UHMW	
SEFR2	221048	3	76.2	1 - UHMW	1 - Buna N	1 - UHMW	
SEFR2	221240	4	101.6	1 - UHMW	1 - Buna N	1 - UHMW	
SEFR2	221160	2	50.8	1 - UHMW	2 - SFY	1 - UHMW	
SEFR2	9634053748	2	50.8	1 - UHMW	3 - EPDM	1 - UHMW	
SEFR2	221113	3	76.2	1 - UHMW	2 - SFY	1 - UHMW	
SEFR2	9634053468	3	76.2	1 - UHMW	3 - EPDM	1 - UHMW	
SEFR2	9634058259	4	101.6	1 - UHMW	2 - SFY	1 - UHMW	
SEFR2	220956	4	101.6	1 - UHMW	3 - EPDM	1 - UHMW	
SEFR2	220487	2	50.8	2 - Bronze	2 - SFY	1 - UHMW	
SEFR2	Contact AL	2	50.8	2 - Bronze	3 - EPDM	1 - UHMW	
SEFR2	220850	3	76.2	2 - Bronze	2 - SFY	1 - UHMW	
SEFR2	9634053391	3	76.2	2 - Bronze	3 - EPDM	1 - UHMW	
SEFR2	318561	4	101.6	2 - Bronze	2 - SFY	1 - UHMW	
SEFR2	Contact AL	4	101.6	2 - Bronze	3 - EPDM	1 - UHMW	

Note: Mainstream filter prices do not include media. Order media separately. Media sold in boxes of 10

Mainstream Perforated Metal Single Basket Strainers (SEBR)							
Part No.	Item No.	Size Conn.		Diameter Hole	Cover Gasket and O-Ring	Relief Valve Handle	LLP USD
		in	mm				
							Model 1 Short
SEBR1	225270	2	50.8	E - .125	1 - Buna N	1 - UHMW	
SEBR1	221179	2	50.8	G - .250	1 - Buna N	1 - UHMW	
SEBR1	225271	3	76.2	E - .125	1 - Buna N	1 - UHMW	
SEBR1	221180	3	76.2	G - .250	1 - Buna N	1 - UHMW	
SEBR1	Contact AL	4	101.6	E - .125	1 - Buna N	1 - UHMW	
SEBR1	221223	4	101.6	G - .250	1 - Buna N	1 - UHMW	
SEBR1	220545	2	50.8	E - .125	2 - SFY	1 - UHMW	
SEBR1	221003	2	50.8	G - .250	2 - SFY	1 - UHMW	
SEBR1	Contact AL	2	50.8	E - .125	3 - EPDM	1 - UHMW	
SEBR1	Contact AL	2	50.8	G - .250	3 - EPDM	1 - UHMW	
SEBR1	220425	3	76.2	E - .125	2 - SFY	1 - UHMW	
SEBR1	220999	3	76.2	G - .250	2 - SFY	1 - UHMW	
SEBR1	9634058829	3	76.2	E - .125	3 - EPDM	1 - UHMW	
SEBR1	Contact AL	3	76.2	G - .250	3 - EPDM	1 - UHMW	
SEBR1	220539	4	101.6	E - .125	2 - SFY	1 - UHMW	
SEBR1	220536	4	101.6	G - .250	2 - SFY	1 - UHMW	
SEBR1	Contact AL	4	101.6	E - .125	3 - EPDM	1 - UHMW	
SEBR1	Contact AL	4	101.6	G - .250	3 - EPDM	1 - UHMW	
							Model 2 Long
SEBR2	220344	2	50.8	E - .125	1 - Buna N	1 - UHMW	
SEBR2	221209	2	50.8	G - .250	1 - Buna N	1 - UHMW	
SEBR2	220363	3	76.2	E - .125	1 - Buna N	1 - UHMW	
SEBR2	221211	3	76.2	G - .250	1 - Buna N	1 - UHMW	
SEBR2	221067	4	101.6	E - .125	1 - Buna N	1 - UHMW	
SEBR2	319251	4	101.6	G - .250	1 - Buna N	1 - UHMW	
SEBR2	9634048586	2	50.8	E - .125	2 - SFY	1 - UHMW	
SEBR2	221210	2	50.8	G - .250	2 - SFY	1 - UHMW	
SEBR2	Contact AL	2	50.8	E - .125	3 - EPDM	1 - UHMW	
SEBR2	Contact AL	2	50.8	G - .250	3 - EPDM	1 - UHMW	
SEBR2	Contact AL	3	76.2	E - .125	2 - SFY	1 - UHMW	
SEBR2	220646	3	76.2	G - .250	2 - SFY	1 - UHMW	
SEBR2	221261	3	76.2	E - .125	3 - EPDM	1 - UHMW	
SEBR2	Contact AL	3	76.2	G - .250	3 - EPDM	1 - UHMW	
SEBR2	220868	4	101.6	E - .125	2 - SFY	1 - UHMW	
SEBR2	9634053765	4	101.6	G - .250	2 - SFY	1 - UHMW	
SEBR2	9634068561	4	101.6	E - .125	3 - EPDM	1 - UHMW	
SEBR2	Contact AL	4	101.6	G - .250	3 - EPDM	1 - UHMW	

Mainstream Double Screen Basket Strainers (SESR)							
Part No.	Item No.	Size Conn.		Wire Mesh (M) or Perforated Metal (P) Size	Cover Gasket and O-Ring	Relief Valve Handle	LLP USD
		in	mm				
							Model 1 Short
SESR1	220280	2	50.8	A - .033 dia. P	1 - Buna N	1 - UHMW	
SESR1	221051	2	50.8	C - .062 dia. P	1 - Buna N	1 - UHMW	
SESR1	221055	2	50.8	F - 60 sq. M	1 - Buna N	1 - UHMW	
SESR1	221053	2	50.8	J - 40 sq. M	1 - Buna N	1 - UHMW	
SESR1	221056	2	50.8	K - 100 sq. M	1 - Buna N	1 - UHMW	
SESR1	220161	2	50.8	L - 80 sq. M	1 - Buna N	1 - UHMW	
SESR1	221054	2	50.8	M - 150 sq. M	1 - Buna N	1 - UHMW	
SESR1	221162	2	50.8	P - 20 sq. M	1 - Buna N	1 - UHMW	
SESR1	220193	3	76.2	A - .033 dia. P	1 - Buna N	1 - UHMW	
SESR1	221059	3	76.2	C - .062 dia. P	1 - Buna N	1 - UHMW	
SESR1	221063	3	76.2	F - 60 sq. M	1 - Buna N	1 - UHMW	
SESR1	221061	3	76.2	J - 40 sq. M	1 - Buna N	1 - UHMW	
SESR1	220422	3	76.2	K - 100 sq. M	1 - Buna N	1 - UHMW	
SESR1	Contact AL	3	76.2	L - 80 sq. M	1 - Buna N	1 - UHMW	
SESR1	Contact AL	3	76.2	M - 150 sq. M	1 - Buna N	1 - UHMW	
SESR1	221161	3	76.2	P - 20 sq. M	1 - Buna N	1 - UHMW	
SESR1	220946	4	101.6	A - .033 dia. P	1 - Buna N	1 - UHMW	
SESR1	Contact AL	4	101.6	C - .062 dia. P	1 - Buna N	1 - UHMW	
SESR1	Contact AL	4	101.6	F - 60 sq. M	1 - Buna N	1 - UHMW	
SESR1	221228	4	101.6	J - 40 sq. M	1 - Buna N	1 - UHMW	
SESR1	Contact AL	4	101.6	K - 100 sq. M	1 - Buna N	1 - UHMW	
SESR1	220640	4	101.6	L - 80 sq. M	1 - Buna N	1 - UHMW	
SESR1	Contact AL	4	101.6	M - 150 sq. M	1 - Buna N	1 - UHMW	
SESR1	220467	4	101.6	P - 20 sq. M	1 - Buna N	1 - UHMW	
SESR1	220282	2	50.8	A - .033 dia. P	2 - SFY	1 - UHMW	
SESR1	221325	2	50.8	C - .062 dia. P	2 - SFY	1 - UHMW	
SESR1	220230	2	50.8	F - 60 sq. M	2 - SFY	1 - UHMW	
SESR1	221191	2	50.8	J - 40 sq. M	2 - SFY	1 - UHMW	
SESR1	220173	2	50.8	K - 100 sq. M	2 - SFY	1 - UHMW	
SESR1	220860	2	50.8	L - 80 sq. M	2 - SFY	1 - UHMW	
SESR1	220638	2	50.8	M - 150 sq. M	2 - SFY	1 - UHMW	
SESR1	220166	2	50.8	P - 20 sq. M	2 - SFY	1 - UHMW	
SESR1	9634053380	2	50.8	A - .033 dia. P	3 - EPDM	1 - UHMW	
SESR1	Contact AL	2	50.8	C - .062 dia. P	3 - EPDM	1 - UHMW	
SESR1	Contact AL	2	50.8	F - 60 sq. M	3 - EPDM	1 - UHMW	
SESR1	Contact AL	2	50.8	J - 40 sq. M	3 - EPDM	1 - UHMW	
SESR1	220980	2	50.8	K - 100 sq. M	3 - EPDM	1 - UHMW	
SESR1	Contact AL	2	50.8	L - 80 sq. M	3 - EPDM	1 - UHMW	
SESR1	Contact AL	2	50.8	M - 150 sq. M	3 - EPDM	1 - UHMW	
SESR1	Contact AL	2	50.8	P - 20 sq. M	3 - EPDM	1 - UHMW	

Mainstream Double Screen Basket Strainers (SESR)							
Part No.	Item No.	Size Conn.		Wire Mesh (M) or Perforated Metal (P) Size	Cover Gasket and O-Ring	Relief Valve Handle	LLP USD
		in	mm				
Model 1 Short							
SESR1	220328	3	76.2	A - .033 dia. P	2 - SFY	1 - UHMW	
SESR1	220186	3	76.2	C - .062 dia. P	2 - SFY	1 - UHMW	
SESR1	220508	3	76.2	F - 60 sq. M	2 - SFY	1 - UHMW	
SESR1	9634053175	3	76.2	J - 40 sq. M	2 - SFY	1 - UHMW	
SESR1	220476	3	76.2	K - 100 sq. M	2 - SFY	1 - UHMW	
SESR1	9634052616	3	76.2	L - 80 sq. M	2 - SFY	1 - UHMW	
SESR1	220174	3	76.2	M - 150 sq. M	2 - SFY	1 - UHMW	
SESR1	225267	3	76.2	P - 20 sq. M	2 - SFY	1 - UHMW	
SESR1	9634053388	3	76.2	A - .033 dia. P	3 - EPDM	1 - UHMW	
SESR1	Contact AL	3	76.2	C - .062 dia. P	3 - EPDM	1 - UHMW	
SESR1	Contact AL	3	76.2	F - 60 sq. M	3 - EPDM	1 - UHMW	
SESR1	Contact AL	3	76.2	J - 40 sq. M	3 - EPDM	1 - UHMW	
SESR1	9634069709	3	76.2	K - 100 sq. M	3 - EPDM	1 - UHMW	
SESR1	Contact AL	3	76.2	L - 80 sq. M	3 - EPDM	1 - UHMW	
SESR1	Contact AL	3	76.2	M - 150 sq. M	3 - EPDM	1 - UHMW	
SESR1	9634058959	3	76.2	P - 20 sq. M	3 - EPDM	1 - UHMW	
SESR1	Contact AL	4	101.6	A - .033 dia. P	2 - SFY	1 - UHMW	
SESR1	220950	4	101.6	C - .062 dia. P	2 - SFY	1 - UHMW	
SESR1	Contact AL	4	101.6	F - 60 sq. M	2 - SFY	1 - UHMW	
SESR1	Contact AL	4	101.6	J - 40 sq. M	2 - SFY	1 - UHMW	
SESR1	Contact AL	4	101.6	K - 100 sq. M	2 - SFY	1 - UHMW	
SESR1	Contact AL	4	101.6	L - 80 sq. M	2 - SFY	1 - UHMW	
SESR1	Contact AL	4	101.6	M - 150 sq. M	2 - SFY	1 - UHMW	
SESR1	Contact AL	4	101.6	P - 20 sq. M	2 - SFY	1 - UHMW	
SESR1	Contact AL	4	101.6	A - .033 dia. P	3 - EPDM	1 - UHMW	
SESR1	Contact AL	4	101.6	C - .062 dia. P	3 - EPDM	1 - UHMW	
SESR1	Contact AL	4	101.6	F - 60 sq. M	3 - EPDM	1 - UHMW	
SESR1	9634052774	4	101.6	J - 40 sq. M	3 - EPDM	1 - UHMW	
SESR1	Contact AL	4	101.6	K - 100 sq. M	3 - EPDM	1 - UHMW	
SESR1	Contact AL	4	101.6	L - 80 sq. M	3 - EPDM	1 - UHMW	
SESR1	Contact AL	4	101.6	M - 150 sq. M	3 - EPDM	1 - UHMW	
SESR1	Contact AL	4	101.6	P - 20 sq. M	3 - EPDM	1 - UHMW	
Model 2 Long							
SESR2	220561	2	50.8	A - .033 dia. P	1 - Buna N	1 - UHMW	
SESR2	221083	2	50.8	C - .062 dia. P	1 - Buna N	1 - UHMW	
SESR2	221087	2	50.8	F - 60 sq. M	1 - Buna N	1 - UHMW	
SESR2	221085	2	50.8	J - 40 sq. M	1 - Buna N	1 - UHMW	
SESR2	220162	2	50.8	K - 100 sq. M	1 - Buna N	1 - UHMW	
SESR2	221138	2	50.8	L - 80 sq. M	1 - Buna N	1 - UHMW	
SESR2	221086	2	50.8	M - 150 sq. M	1 - Buna N	1 - UHMW	
SESR2	221165	2	50.8	P - 20 sq. M	1 - Buna N	1 - UHMW	
SESR2	220229	3	76.2	A - .033 dia. P	1 - Buna N	1 - UHMW	
SESR2	221091	3	76.2	C - .062 dia. P	1 - Buna N	1 - UHMW	
SESR2	221095	3	76.2	F - 60 sq. M	1 - Buna N	1 - UHMW	
SESR2	221093	3	76.2	J - 40 sq. M	1 - Buna N	1 - UHMW	
SESR2	221096	3	76.2	K - 100 sq. M	1 - Buna N	1 - UHMW	
SESR2	225268	3	76.2	L - 80 sq. M	1 - Buna N	1 - UHMW	
SESR2	221094	3	76.2	M - 150 sq. M	1 - Buna N	1 - UHMW	
SESR2	221166	3	76.2	P - 20 sq. M	1 - Buna N	1 - UHMW	

Mainstream Double Screen Basket Strainers (SESR)							
Part No.	Item No.	Size Conn.		Wire Mesh (M) or Perforated Metal (P) Size	Cover Gasket and O-Ring	Relief Valve Handle	LLP USD
		in	mm				
Model 2 Long							
SESR2	9634053254	4	101.6	A - .033 dia. P	1 - Buna N	1 - UHMW	
SESR2	9634055110	4	101.6	C - .062 dia. P	1 - Buna N	1 - UHMW	
SESR2	220608	4	101.6	F - 60 sq. M	1 - Buna N	1 - UHMW	
SESR2	220444	4	101.6	J - 40 sq. M	1 - Buna N	1 - UHMW	
SESR2	221346	4	101.6	K - 100 sq. M	1 - Buna N	1 - UHMW	
SESR2	9634068529	4	101.6	L - 80 sq. M	1 - Buna N	1 - UHMW	
SESR2	9634054664	4	101.6	M - 150 sq. M	1 - Buna N	1 - UHMW	
SESR2	220955	4	101.6	P - 20 sq. M	1 - Buna N	1 - UHMW	
SESR2	Contact AL	2	50.8	A - .033 dia. P	2 - SFY	1 - UHMW	
SESR2	220145	2	50.8	C - .062 dia. P	2 - SFY	1 - UHMW	
SESR2	220313	2	50.8	F - 60 sq. M	2 - SFY	1 - UHMW	
SESR2	220268	2	50.8	J - 40 sq. M	2 - SFY	1 - UHMW	
SESR2	221188	2	50.8	K - 100 sq. M	2 - SFY	1 - UHMW	
SESR2	221266	2	50.8	L - 80 sq. M	2 - SFY	1 - UHMW	
SESR2	220468	2	50.8	M - 150 sq. M	2 - SFY	1 - UHMW	
SESR2	220209	2	50.8	P - 20 sq. M	2 - SFY	1 - UHMW	
SESR2	9634053469	2	50.8	A - .033 dia. P	3 - EPDM	1 - UHMW	
SESR2	Contact AL	2	50.8	C - .062 dia. P	3 - EPDM	1 - UHMW	
SESR2	Contact AL	2	50.8	F - 60 sq. M	3 - EPDM	1 - UHMW	
SESR2	221392	2	50.8	J - 40 sq. M	3 - EPDM	1 - UHMW	
SESR2	Contact AL	2	50.8	K - 100 sq. M	3 - EPDM	1 - UHMW	
SESR2	Contact AL	2	50.8	L - 80 sq. M	3 - EPDM	1 - UHMW	
SESR2	Contact AL	2	50.8	M - 150 sq. M	3 - EPDM	1 - UHMW	
SESR2	Contact AL	2	50.8	P - 20 sq. M	3 - EPDM	1 - UHMW	
SESR2	9634053253	3	76.2	A - .033 dia. P	2 - SFY	1 - UHMW	
SESR2	225264	3	76.2	C - .062 dia. P	2 - SFY	1 - UHMW	
SESR2	225269	3	76.2	F - 60 sq. M	2 - SFY	1 - UHMW	
SESR2	220285	3	76.2	J - 40 sq. M	2 - SFY	1 - UHMW	
SESR2	220016	3	76.2	K - 100 sq. M	2 - SFY	1 - UHMW	
SESR2	220295	3	76.2	L - 80 sq. M	2 - SFY	1 - UHMW	
SESR2	Contact AL	3	76.2	M - 150 sq. M	2 - SFY	1 - UHMW	
SESR2	220014	3	76.2	P - 20 sq. M	2 - SFY	1 - UHMW	
SESR2	9634053376	3	76.2	A - .033 dia. P	3 - EPDM	1 - UHMW	
SESR2	Contact AL	3	76.2	C - .062 dia. P	3 - EPDM	1 - UHMW	
SESR2	Contact AL	3	76.2	F - 60 sq. M	3 - EPDM	1 - UHMW	
SESR2	220464	3	76.2	J - 40 sq. M	3 - EPDM	1 - UHMW	
SESR2	Contact AL	3	76.2	K - 100 sq. M	3 - EPDM	1 - UHMW	
SESR2	Contact AL	3	76.2	L - 80 sq. M	3 - EPDM	1 - UHMW	
SESR2	221159	3	76.2	M - 150 sq. M	3 - EPDM	1 - UHMW	
SESR2	Contact AL	3	76.2	P - 20 sq. M	3 - EPDM	1 - UHMW	

Mainstream Double Screen Basket Strainers (SESR)							
Part No.	Item No.	Size Conn.		Wire Mesh (M) or Perforated Metal (P) Size	Cover Gasket and O-Ring	Relief Valve Handle	LLP USD
		in	mm				
Model 2 Long							
SESR2	9634053255	4	101.6	A - .033 dia. P	2 - SFY	1 - UHMW	
SESR2	221208	4	101.6	C - .062 dia. P	2 - SFY	1 - UHMW	
SESR2	220870	4	101.6	F - 60 sq. M	2 - SFY	1 - UHMW	
SESR2	9634054114	4	101.6	J - 40 sq. M	2 - SFY	1 - UHMW	
SESR2	9634048195	4	101.6	K - 100 sq. M	2 - SFY	1 - UHMW	
SESR2	Contact AL	4	101.6	L - 80 sq. M	2 - SFY	1 - UHMW	
SESR2	9634053936	4	101.6	M - 150 sq. M	2 - SFY	1 - UHMW	
SESR2	9634049370	4	101.6	P - 20 sq. M	2 - SFY	1 - UHMW	
SESR2	9634053377	4	101.6	A - .033 dia. P	3 - EPDM	1 - UHMW	
SESR2	9634069556	4	101.6	C - .062 dia. P	3 - EPDM	1 - UHMW	
SESR2	221349	4	101.6	F - 60 sq. M	3 - EPDM	1 - UHMW	
SESR2	221182	4	101.6	J - 40 sq. M	3 - EPDM	1 - UHMW	
SESR2	Contact AL	4	101.6	K - 100 sq. M	3 - EPDM	1 - UHMW	
SESR2	Contact AL	4	101.6	L - 80 sq. M	3 - EPDM	1 - UHMW	
SESR2	Contact AL	4	101.6	M - 150 sq. M	3 - EPDM	1 - UHMW	
SESR2	Contact AL	4	101.6	P - 20 sq. M	3 - EPDM	1 - UHMW	

Short Unit - Standard Port			Long Unit - Standard Port			Size	
Item No.	LLP USD	Description	Item No.	LLP USD	Description	Inch	mm
Inline Filters (FM)							
Contact A/L		FM1-1-G-316	Not Available		FM2-1 1/2-G-316	1	25.4
9634067535		FM1-1 1/2-G-316	Contact A/L		FM2-1 1/2-G-316	1 1/2	38.1
220914		FM1-2-G-316	Contact A/L		FM2-2-G-316	2	50.8
221391		FM1-2 1/2-G-316	220170		FM2-2 1/2-G-316	2 1/2	63.5
9634068659		FM1-3-G-316	220421		FM2-3-G-316	3	76.2
Short Unit - Side Entry			Long Unit - Side Entry			Size	
Item No.	LLP USD	Description	Item No.	LLP USD	Description	Inch	mm
Side Inlet Filters (FMS)							
220683		FMS1-1-G-316	Not Available			1	25.4
220687		FMS1-1 1/2-G-316	220712		FMS2-1 1/2-G-316	1 1/2	38.1
220689		FMS1-2-G-316	220678		FMS2-2-G-316	2	50.8
220692		FMS1-2 1/2-G-316	220704		FMS2-2 1/2-G-316	2 1/2	63.5
220696		FMS1-3-G-316	220664		FMS2-3-G-316	3	76.2

Short Unit - Standard Port			Long Unit - Standard Port			Size	
Item No.	LLP USD	Description	Item No.	LLP USD	Description	Inch	mm
Strainers (SM)							
220594		SM1-1-G-316	Not Available			1	25.4
220110		SM1-1 1/2-G-316	220428		SM2-1 1/2-G-316	1 1/2	38.1
220015		SM1-2-G-316	220142		SM2-2-G-316	2	50.8
220407		SM1-2 1/2-G-316	220382		SM2-2 1/2-G-316	2 1/2	63.5
220362		SM1-3-G-316	220471		SM2-3-G-316	3	76.2
Short Unit - Side Entry			Long Unit - Side Entry			Size	
Item No.	LLP USD	Description	Item No.	LLP USD	Description	Inch	mm
Side Inlet Strainers (SMS)							
220722		SMS1-1-G-316	Not Available			1	25.4
220735		SMS1-1 1/2-G-316	220780		SMS2-1 1/2-G-316	1 1/2	38.1
220748		SMS1-2-G-316	220825		SMS2-2-G-316	2	50.8
220776		SMS1-2 1/2-G-316	220778		SMS2-2 1/2-G-316	2 1/2	63.5
220777		SMS1-3-G-316	220779		SMS2-3-G-316	3	76.2

NOTE: Price for Streamline™ filter units include standard package of 50 media tubes.

Alfa Laval in brief

Alfa Laval is a leading global provider of specialized products and engineered solutions.

Our equipment, systems and services are dedicated to helping customers to optimize the performance of their processes. Time and time again.

We help our customers to heat, cool, separate and transport products such as oil, water, chemicals, beverages, foodstuffs, starch and pharmaceuticals.

Our worldwide organization works closely with customers in almost 100 countries to help them stay ahead.

How to contact Alfa Laval

Contact details for all countries are continually updated on our website. Please visit www.alfalaval.com to access the information.

100001540ENUS-1 2101

Alfa Laval is a trademark registered and owned by Alfa Laval Corporate AB, Sweden. Alfa Laval © 2014

Distributed by:

NELSON JAMESON
INC.

800-826-8302 nelsonjameson.com