

# Floor Care Products

**NELSON JAMESON**  
INC.  
DELIVERING THE EXCEPTIONAL™

From floor machines, to chemicals, brooms, and wet floor signs, Nelson-Jameson is a one-stop shop for your Floor Care Product needs.



Floor Machines

Floor Brooms & Brushes

Squeegees

Wet Mops

Cleaning Chemicals

Floor Dryers



**SupplyRITE™**  
**Inventory Solutions**

Your trusted partner in inventory management solutions.

**Clarke**



**CFS BRANDS**  
DESIGNING VALUE.  
DELIVERING SUCCESS.

**SPARTA**

**3M**

**CARLISLE**  
FOODSERVICE PRODUCTS

## Floor Machines

### CFP™ Floor Machine

Multi-purpose and built to last. Features easy-to-use foot operated compression handle adjuster and quick release pad/brush system making pad holder and brush changes fast and easy. All models are versatile and made to clean, strip or polish almost any floor surface.

#### All models feature:

- Safety switch standard.
- 110-Volt motor.
- 50' Safety yellow power cord.
- Pad driver w/ universal clutch plate.

**Clarke**



Stock #	Model	Brush Diameter	Motor	RPM
354-2461	CFP PRO 17HD	17"	1.5 HP	175
354-2462	CFP PRO 20HD	20"	1.5 HP	175
354-3466	CFP PRO 20DS	20"	1.5 HP	185/330

### Replacement Brushes for Machine

#### Model CFP PRO 17HD

- 225-6592 Black Stripping Grit Brush
- 225-6590 Red Scrubbing Grit Brush
- 225-6595 .028" Nylon Cleaning Brush
- 225-6596 Short Trim Pad Driver

### Replacement Brushes for Machine

#### Models: CFP PRO 20HD and 20DS

- 225-6597 Black Stripping Grit Brush
- 225-6598 Red Scrubbing Grit Brush
- 225-6599 .028" Nylon Cleaning Brush
- 225-6600 Short Trim Pad Driver

### Focus® II Compact Autoscrubber

Simple to use walk-behind automatic scrubber delivers the best value in the industry. Compact enough to clean narrow aisles and congested areas. Large solution and recovery tanks plus simple on/off disc scrub heads and hospital-quiet operation lets you operate during work hours.



**Clarke**

#### All models feature:

- 20" scrub head and 30" squeegee.
- 2 non-marking foam filled gray wheels.
- One-touch control panel, and onboard charger.

Stock #	Model	Power Source	RPM
354-2219	L20 (05341A)	130 AH 12 V WET Batteries	153
354-2459	L20 (05342A)	130 AH 12 V AGM Batteries	153

### Replacement Brushes for L20 Machines

- 225-6514 Black Stripping Grit Brush
- 225-6504 Red Scrubbing Grit Brush
- 225-6520 .028" Nylon Cleaning Brush

## Brushes For Floor Machines

Make work easier with our line of rotary floor brushes from Carlisle Sanitary Maintenance. Brushes are available for virtually any application from light and medium scrubbing to very aggressive scrubbing of brick and unsealed concrete. Rotary floor brushes outlast 200 floor pads saving time and labor costs. Additional brush types available call our specialists to determine which brush/fill type your application requires.

### Information needed when calling Customer Service:

- Manufacturer of floor machine.
- Name and model number of floor machine.
- Application—cleaning surface.

### Custom Brush Fill Options by Application:

#### Black Stripping Grit Brush

- Aggressive scrubbing and stripping. Replaces black floor pads.

#### Aggressive Stripping Brush

- Very aggressive scrubbing and stripping. Replaces high productivity floor pads.

#### General Cleaning Red Grit Brush

- Medium aggressive scrubbing. Replaces red floor pads.



**CARLISLE**  
FOODSERVICE PRODUCTS

#### Blue Cleaning Grit Brush

- Ideal for heavy-duty scrubbing prior to recoating and great for grout lines less than 1/2". Replaces blue floor pads.

#### Light Cleaning Brush

- Light to medium general cleaning. Replaces green floor pads.

#### Nylon Brush

- General scrubbing. Economy rotary brush.

## Focus® II Mid Size Autoscrubber

Increased capacity, long run times and easy to operate. The disc models are ideal for everyday cleaning. The cylindrical model is perfect for scrubbing grouted tile or rough textured floors. Debris is conveniently collected in a removable tray with cylindrical model only.



**Clarke**

### All models feature:

- 23-Gallon solution and recovery tank.
- Onboard charger.
- 4 Easy-to-access 6-volt 250 AH wet batteries.
- One touch scrubbing controls.
- Power traverse.
- Pad driver included.

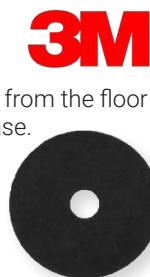
Stock #	Scrub Path	Pad Holder Size	RPM	Squeegee Width
354-2220	26" Disc	(2) 13"	200	32.5"
354-2225	28" Disc	(2) 14"	200	35"
354-2230	34" Disc	(2) 17"	200	41"
354-2235	28" Cylindrical	(2) 28"	613	35"

## 3M™ Floor Pads

### Black Stripping Floor Pad 7200

Use to remove all finish, sealer and contaminants from the floor surface. Machine speed 175-600 RPM. 5 pads/case.

Stock #	Size	Stock #	Size
456-2072	13"	456-2087	17"
456-2137	14"	456-2086	20"



### Red Buffer Floor Pad 5100

Specially designed for spray buffing. Machine speed 175-600 RPM. 5 pads/case.

Stock #	Size	Stock #	Size
456-2100	13"	456-2077	17"
456-7011	14"	456-2094	20"



### Blue Cleaner Pad 5300

Ideal for heavy-duty scrubbing prior to recoating. Removes dirt and scuffs, leaving a clean surface. 5 pads/case.

Stock #	Size	Stock #	Size
456-7001	13"	456-2081	17"
456-7008	14"	456-2083	20"



### White Super Polish Floor Pad 4100

For light cleaning to remove soils and scuff marks. Can be used to polish or buff floors. Machine speed 150-400 RPM. 5 pads/case.

Stock #	Size	Stock #	Size
456-7009	13"	456-2089	17"
456-7010	14"	456-2092	20"



\*Other types of pads & sizes available

## Focus® II Rider Autoscrubber

Delivers cost-effective, sustainable performance while increasing productivity. Tight turning radius puts this rider at the top of its class. Increased down pressure for one pass cleaning of heavy soils.



**Clarke**

### All models feature:

- Onboard charger, pad holder and mixing station.
- 31-Gallon solution and recovery tank.
- (6) 6-Volt 242 AH wet batteries.

Stock #	Model	Scrub Path	Pad Holder Size	RPM	Squeegee Width
354-2240	56114014	28"	(2) 14"	260	32.6"
354-2242	56114032	34"	(2) 17"	260	41.4"

## Nelson-Jameson Floor Pads

Great quality pads at a fraction of the price of others out there.

### Black Stripping Floor Pads

For wet stripping applications and aggressive removal of dirt and old finish buildup. Machine speed 300 RPM. 5 pads/case.

Stock #	Size	Stock #	Size
401-1182	13"	401-1189	17"
401-1183	14"	401-1192	20"



### Red Buffing Floor Pads

For light daily cleaning and spray buffing. Removes scuff marks and dirt, while producing a gloss shine. Machine speed 800 RPM. 5 pads/case.

Stock #	Size	Stock #	Size
401-1125	13"	401-1132	17"
401-1126	14"	401-1135	20"



### Blue Cleaning Floor Pads

For light scrubbing and heavy duty spray cleaning. Aggressively removes dirt and scuff marks from heavily soiled floors. Machine speed 350 RPM. 5 pads/case.

Stock #	Size	Stock #	Size
401-1138	13"	401-1155	17"
401-1149	14"	401-1158	20"



### White Super Polish Floor Pads

Extra fine pad for polishing clean, dry floors. Use dry or wet for High gloss "wet look" to newly finished floors. Machine speed 3000 RPM. 5 pads/case.

Stock #	Size	Stock #	Size
401-1084	13"	401-1091	17"
401-1085	14"	401-1094	20"



\*Other types of pads & sizes available



## Floor Brooms & Dust Pans



### Duo-Sweep Angle Broom **SPARTA**

Designed for general purpose sweeping, reaching into corners, along walls, or in hard to reach areas for fast, efficient cleaning. Choose flagged for fine debris or unflagged for larger debris or wet applications. 48" Fiberglass handle. 54" OAL.

<u>Stock #</u>	<u>Color</u>	<u>Stock #</u>	<u>Color</u>
----------------	--------------	----------------	--------------

#### 12" Flagged

<b>618-6240</b>	White
<b>618-6238</b>	Red
<b>618-6239</b>	Yellow
<b>618-6235</b>	Blue
<b>618-6237</b>	Green
<b>618-6236</b>	Brown
<b>618-6241</b>	Tan
<b>618-6249</b>	Black
<b>618-6350</b>	Orange
<b>618-6199</b>	Purple

#### 12" Unflagged

<b>618-6247</b>	White
<b>618-6245</b>	Red
<b>618-6246</b>	Yellow
<b>618-6242</b>	Blue
<b>618-6244</b>	Green
<b>618-6243</b>	Brown
<b>618-6248</b>	Tan
<b>618-6230</b>	Black
<b>618-6352</b>	Orange
<b>618-6177</b>	Purple

### Fine Floor Sweep

Ideal for sweeping dust and fine particles on smooth surfaces. Soft, slightly flagged gray polypropylene bristles. Black plastic block. Handle sold separately. Use any standard thread handle on page 5.

<u>Stock #</u>	<u>Size</u>
----------------	-------------

<b>225-6104</b>	18"
<b>225-6058</b>	24"



**SPARTA**

### Medium Floor Sweep

Use for general to light industrial applications. Black polypropylene bristle. Black plastic block. Handle sold separately. Use any standard thread handle on page 5.

<u>Stock #</u>	<u>Size</u>
----------------	-------------

<b>225-6060</b>	18"
<b>225-6061</b>	24"



**SPARTA**

### Heavy-Duty Floor Sweep

Ideal for use on rough surfaces and where water, sweeping compounds or cleaning solvents are used. Stiff maroon polypropylene bristles. Black plastic block. Handle sold separately. Use any standard thread handle on page 5.

<u>Stock #</u>	<u>Size</u>
----------------	-------------

<b>225-6062</b>	18"
<b>225-6063</b>	24"



### Lobby Dustpan and Broom Set

Made especially for the food processing industry, this dustpan has no hard angles that could harbor bacteria. Ideal for dry areas and sweeping in between narrow spaces. 37" Aluminum handles with colored hang caps. Made with FDA-compliant materials.



<u>Stock #</u>	<u>Color</u>
<b>690-3400</b>	White
<b>690-3401</b>	Red
<b>690-3402</b>	Yellow
<b>690-3403</b>	Blue
<b>690-3404</b>	Green
<b>690-3405</b>	Black
<b>690-3406</b>	Orange
<b>690-3407</b>	Pink
<b>690-3408</b>	Purple



### Plastic Dustpan

Durable, will not rust, corrode or dent. This handheld rubberized dust pan measures 12"W x 3"H x 8"D. Handle has a hang-up hole for easy storage.

<u>Stock #</u>	<u>Color</u>
<b>420-2570</b>	White
<b>420-2571</b>	Red
<b>420-2572</b>	Yellow
<b>420-2573</b>	Blue
<b>420-2574</b>	Green
<b>420-2577</b>	Gray
<b>420-2576</b>	Brown
<b>440-2002</b>	Black
<b>420-2575</b>	Orange
<b>420-2579</b>	Pink
<b>420-2578</b>	Purple



### Omni-Sweep™

Short, heavy bristles in front sweep up the large debris, while the long, fine and medium bristles in back sweep the fine particles. Use any standard thread handle on page 5. Handle sold separately.

**SPARTA**



<u>Stock #</u>	<u>Color</u>
----------------	--------------

<b>18"</b>	
<b>618-6027</b>	White
<b>618-6832</b>	Red
<b>618-6957</b>	Yellow
<b>618-6701</b>	Blue
<b>618-6341</b>	Green
<b>618-6838</b>	Brown
<b>618-6703</b>	Black
<b>618-6338</b>	Orange
<b>618-6839</b>	Purple

<u>Stock #</u>	<u>Color</u>
----------------	--------------

<b>24"</b>	
<b>618-6029</b>	White
<b>618-6833</b>	Red
<b>618-6959</b>	Yellow
<b>618-6702</b>	Blue
<b>618-6342</b>	Green
<b>618-6834</b>	Brown
<b>618-6704</b>	Black
<b>618-6334</b>	Orange
<b>618-6841</b>	Purple

## Euro-Thread Handle

Use with all Remco and Vikan squeegees, brushes, brooms and scrubs. Color-coded, ergonomic sleeves for easy identification. Variety of materials, sizes and colors available.

Stock #	Color	Stock #	Color
<b>51" - Ultra Hygiene Polypropylene</b>		<b>59" - Ultra Hygiene Polypropylene</b>	
690-7283	White	690-7291	White
690-7282	Red	690-7290	Red
690-7284	Yellow	690-7292	Yellow
690-7281	Blue	690-7289	Blue
690-7280	Green	690-7288	Green
690-7287	Black	690-7295	Black
690-7285	Orange	690-7293	Orange
690-7301	Pink	690-7302	Pink
690-7286	Purple	690-7294	Purple

Stock #	Color	Stock #	Color
<b>51" - Aluminum</b>		<b>59" - Aluminum</b>	
690-2201	White	690-2262	White
690-7062	Red	690-2261	Red
690-7049	Yellow	690-2256	Yellow
690-2191	Blue	690-2260	Blue
690-2192	Green	690-2258	Green
690-7236	Black	690-2202	Black
690-7230	Orange	690-2264	Orange
690-2733	Pink	690-2734	Pink
690-7240	Purple	690-2255	Purple



Stock #	Color
<b>60" - Stainless Steel</b>	
690-2244	White
690-2243	Red
690-2245	Yellow
690-2242	Blue
690-2241	Green
690-7145	Black

## Soft-Stiff Bristled Floor Broom

Soft and stiff bristles make this an all-purpose broom. Stiff bristles loosen stubborn debris and soft bristles sweep away loose particles. Use any Euro-thread handle. Handle sold separately.



Stock #	Color	Stock #	Color
<b>16.5"</b>		<b>23.5"</b>	
690-2064	White	690-2075	White
690-2063	Red	690-2097	Red
690-2077	Yellow	690-2076	Yellow
690-2061	Blue	690-2096	Blue
690-2062	Green	690-2095	Green
690-2055	Black	690-2043	Black
690-2388	Orange		
690-2742	Pink		
690-2029	Purple		

## Fiberglass Handle

Easy to clean and can't absorb bacteria-laden dirt and moisture. Color-coded to ensure proper brush segregation. Solidfilled handles feature black hang caps to keep separate from the standard handles with white hang caps. 1" diameter. 60" OAL.

Stock #	Color	Stock #	Color
<b>Standard Thread</b>		<b>Solid Filled Standard Thread</b>	
618-6002	White	046-6116	White
618-6818	Red	046-6112	Red
618-6918	Yellow	046-6110	Yellow
618-6724	Blue	046-6114	Blue
618-6313	Green	046-6118	Green
618-6212	Brown	046-6120	Brown
618-7116	Tan	046-6122	Black
618-6169	Black	046-6124	Orange
618-6589	Orange	046-6126	Purple
618-6176	Purple		

## Tapered/Standard Thread

618-6417	White
618-6823	Red
618-6910	Yellow
618-6720	Blue
618-6312	Green
618-6211	Brown
618-6424	Tan
618-6167	Black



## Lobby Broom

Soft-bristled lobby broom is great for dry areas and sweeping in narrow spaces. 3" long polyester bristles. Use any Euro-thread handle. Handle sold separately.

Stock #	Color
<b>10.25"</b>	
690-2948	White
690-7056	Red
690-2919	Yellow
690-2039	Blue
690-7015	Green



## Medium Duty Floor Broom

Use this medium duty floor broom for a variety of applications. 2" L polyester bristles are set in solid polypropylene block. Use any Euro-thread handle. Handle sold separately.

Stock #	Color
<b>16"</b>	
690-2949	White
690-2803	Red
690-2926	Yellow
690-7038	Blue
690-7104	Green
690-7086	Orange
690-2743	Pink
690-7154	Purple



## Wall & Floor Scrub

Total Color brushes—blocks and bristles are made of the same color. Meet FDA and USDA requirements. Solid polypropylene block construction. Stiff polyester bristle. Use any Euro-thread handle on page 5. Handle sold separately. 12"L x 3", 2" Trim.

**Stock #**      **Color**

### Stiff Bristle

- 690-2951 White
- 690-2074 Red
- 690-2927 Yellow
- 690-2073 Blue
- 690-2976 Green
- 690-2072 Black
- 690-7201 Orange
- 690-2745 Pink
- 690-2826 Purple



**Vikan**

## Hi-Lo™ Floor Scrub Brush

Maximum cleaning action in open areas and under counters or equipment. Maintain effective scrubbing straight up or at an angle. Durable structural foam block won't warp, crack, split or splinter. Use any standard thread handle on page 5. Handle sold separately.

**Stock #**      **Color**

### 10"L, 1-1/4" Bristle Trim

- 618-6069 White
- 618-6822 Red
- 618-6020 Yellow
- 618-6792 Blue
- 618-6374 Green
- 618-6291 Brown
- 618-6532 Black
- 618-6156 Orange
- 618-6209 Purple



**SPARTA**

## Tile & Grout Brush

Dual purpose brush with molded-in scraper that can be held in your hand or used with any standard thread handle in two different positions. Stiff crimped nylon bristles remove dirt, grime and residue. Use any standard thread handle on page 5. Handle sold separately. 9"L x 1.25", 1" Trim.

**Stock #**      **Color**

- 618-7164 White
- 618-7369 Red
- 618-7433 Yellow
- 618-7434 Blue
- 618-7384 Green



**CARLISLE**  
FOODSERVICE PRODUCTS

## Swivel Scrub Brush

Clean baseboards, walls, around equipment, hard-to-reach corners and areas where floor machines can't. Accepts any standard thread handle on page 5. Handle sold separately. 8" L x 3.5". 1" Trim.

**Stock #**      **Color**

### General Purpose Polyester Bristle

- 618-6501 White
- 618-6505 Red
- 618-6503 Yellow
- 618-6509 Blue
- 618-6507 Green
- 618-6511 Black

### Heavy-Duty Grit Embedded Nylon Bristle

- 225-6131 Rust



**SPARTA**

## Stainless Steel Floor Scraper

Heavy-duty stainless steel floor scraper quickly removes stuck-on food particles and other caked on debris from floors. The zinc diecast socket accepts any standard threaded/tapered handle on page 5. Handle sold separately. 8" W.

**Stock #**  
618-7216

**CARLISLE**  
FOODSERVICE PRODUCTS



## Floor Drain Brushes & Handles

Tough polypropylene bristles and nonabsorbent plastic block will help you fight bacterial contamination. Color-coded black bristles help sanitation personnel keep the brush segregated to avoid cross-contamination. Handles imprinted with "Use for Floor Drain Only" in English and Spanish. Use handles listed below only. Handles sold separately.

**Stock #**      **Size**

### Brushes

- 618-6550 3"Dia
- 618-6551 4"Dia
- 618-6552 5"Dia
- 618-6553 6"Dia

### White Handles

- 618-6451 48"L
- 618-6452 60"L

### Black Handles

- 618-6453 36"L
- 618-6454 48"L
- 618-6455 60"L



**SPARTA**



## Single Blade Ultra Hygiene Squeegee

The specially blended rubber blade is flexible and durable for use on a variety of work surfaces. Made from FDA compliant materials. Use any Euro-thread handle on page 5. Handle sold separately.



**Stock #**      **Color**

<b>16"</b>	
<b>690-7193</b>	White
<b>690-7192</b>	Red
<b>690-7194</b>	Yellow
<b>690-7191</b>	Blue
<b>690-7190</b>	Green
<b>690-7198</b>	Black
<b>690-7196</b>	Orange
<b>690-7195</b>	Pink
<b>690-7197</b>	Purple

<b>20"</b>	
<b>690-7203</b>	White
<b>690-7202</b>	Red
<b>690-7204</b>	Yellow
<b>690-7200</b>	Blue
<b>690-7199</b>	Green

**Stock #**      **Color**

<b>24"</b>	
<b>690-7208</b>	White
<b>690-7207</b>	Red
<b>690-7209</b>	Yellow
<b>690-7206</b>	Blue
<b>690-7205</b>	Green
<b>690-7213</b>	Black
<b>690-7216</b>	Orange
<b>690-7215</b>	Pink
<b>690-7212</b>	Purple

<b>28"</b>	
<b>690-2721</b>	White
<b>690-2719</b>	Red
<b>690-2727</b>	Yellow
<b>690-7218</b>	Blue
<b>690-7217</b>	Green



## Double Blade Ultra Hygiene Squeegee

Easy to clean rubber blades will harbor less bacteria than double foam squeegees. Features two blades in a replacement cassette for quick and easy blade replacement. Autoclavable at temperatures up to 212°F/100°C. Made from FDA approved materials. Use any Euro-thread handle on page 5. Handle sold separately.



**Stock #**      **Color**

<b>20"</b>	
<b>690-7520</b>	White
<b>690-7420</b>	Red
<b>690-7620</b>	Yellow
<b>690-7320</b>	Blue
<b>690-7220</b>	Green
<b>690-7720</b>	Black

**Stock #**      **Color**

<b>24"</b>	
<b>690-7524</b>	White
<b>690-7424</b>	Red
<b>690-7624</b>	Yellow
<b>690-7324</b>	Blue
<b>690-7224</b>	Green
<b>690-7724</b>	Black
<b>690-7824</b>	Orange
<b>690-2746</b>	Pink
<b>690-7237</b>	Purple



## Sparta® Spectrum® Double Foam Squeegee

All plastic construction will not rust. Ideal for uneven surfaces. Use any standard thread handle on page 5. Handle sold separately.



**SPARTA**

**Stock #**      **Color**

<b>18"</b>	
<b>618-6255</b>	White
<b>618-6258</b>	Red
<b>618-6257</b>	Yellow
<b>618-6259</b>	Blue
<b>618-6256</b>	Green
<b>618-6349</b>	Orange
<b>618-6347</b>	Purple

**Stock #**      **Color**

<b>24"</b>	
<b>618-6250</b>	White
<b>618-6254</b>	Red
<b>618-6253</b>	Yellow
<b>618-6252</b>	Blue
<b>618-6251</b>	Green
<b>618-6351</b>	Orange
<b>618-6218</b>	Purple

## One-Piece Rubber Squeegee

Prevent cross-contamination with these economical squeegees. Sanitary, solid one-piece construction minimizes possible contamination areas and reduces the possibility for dirt to collect in the squeegee. Use with any standard thread handle on page 5. Handle sold separately.



**SPARTA**

**Stock #**      **Color**

<b>20"</b>	
<b>618-6318</b>	White
<b>618-6319</b>	Red
<b>618-6320</b>	Yellow
<b>618-6321</b>	Blue
<b>618-6322</b>	Green
<b>618-8234</b>	Brown
<b>618-6331</b>	Black
<b>618-6339</b>	Orange
<b>618-6335</b>	Purple

**Stock #**      **Color**

<b>24"</b>	
<b>618-6323</b>	White
<b>618-6324</b>	Red
<b>618-6325</b>	Yellow
<b>618-6326</b>	Blue
<b>618-6327</b>	Green
<b>618-6698</b>	Brown
<b>618-6332</b>	Black
<b>618-6333</b>	Orange
<b>618-6336</b>	Purple

## Red Gum Rubber Floor Squeegee

The 2" non-marking red gum rubber blade conforms to uneven surfaces. Straight squeegees feature baked enamel 1" angle steel frame. Use any tapered or standard thread/tapered tip handle on page 5. Handle sold separately.

**Stock #**      **Size**

<b>618-6123</b>	18"
<b>618-6125</b>	24"
<b>618-6131</b>	36"



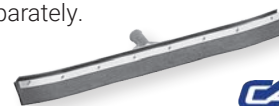
**CARLISLE**  
FOODSERVICE PRODUCTS

## Curved End Floor Squeegee

This curved black rubber blade is perfect for controlling liquids and dirt while cleaning. Unpainted metal frame provides superior strength. Use any tapered or standard thread/tapered tip handle on page 5. Handle sold separately.

**Stock #**      **Size**

<b>225-6036</b>	24"
<b>225-6040</b>	36"



**CARLISLE**  
FOODSERVICE PRODUCTS

## Wet Mops & Handles



### Blended Cut-End Wet Mop

Color-coded cotton/synthetic blend mops combine high performance with long product life. Cotton fibers provide high water absorption and retention for effective floor drying. Not launderable. 12/case.

**Stock #**      **Color**

#### Narrow 1-1/4" Band

##### Medium #20

<b>612-1710</b>	White
<b>612-1715</b>	Red
<b>612-1720</b>	Yellow
<b>612-1725</b>	Blue
<b>612-1730</b>	Green
<b>612-1735</b>	Orange

##### Large #24

<b>612-1810</b>	White
<b>612-1815</b>	Red
<b>612-1820</b>	Yellow
<b>612-1825</b>	Blue
<b>612-1830</b>	Green
<b>612-1835</b>	Orange

##### X-Large #32

<b>612-1910</b>	White
<b>612-1915</b>	Red
<b>612-1920</b>	Yellow
<b>612-1925</b>	Blue
<b>612-1930</b>	Green
<b>612-1935</b>	Orange

**Stock #**      **Color**

#### Wide 5" Band

##### Medium #20

<b>612-2710</b>	White
<b>612-2715</b>	Red
<b>612-2720</b>	Yellow
<b>612-2725</b>	Blue
<b>612-2730</b>	Green
<b>612-2735</b>	Orange

##### Large #24

<b>612-2810</b>	White
<b>612-2815</b>	Red
<b>612-2820</b>	Yellow
<b>612-2825</b>	Blue
<b>612-2830</b>	Green
<b>612-2835</b>	Orange

##### X-Large #32

<b>612-2910</b>	White
<b>612-2915</b>	Red
<b>612-2920</b>	Yellow
<b>612-2925</b>	Blue
<b>612-2930</b>	Green
<b>612-2935</b>	Orange

### Economy Mop Bucket & Side Wringer Combo

Durable and corrosion resistant molded polyethylene buckets and wringers with non-marking casters. Now available in five colors to support your color-coding programs. 35-quart capacity.

**Stock #**      **Color**

<b>618-2142</b>	Red
<b>618-6146</b>	Yellow
<b>618-2144</b>	Blue
<b>618-2145</b>	Green
<b>618-2146</b>	Brown



### Blended Looped-End Wet Mop

Looped-end mops provide superior performance—outlasting cut-end mops 8 to 1. Looped-end prevents fraying and unraveling, resulting in reduced labor costs. Cotton/synthetic blended yarn combines high performance with long product life. Not launderable. 12/case.

**Stock #**      **Color**

#### Narrow 1-1/4" Band

##### Medium

<b>612-2000</b>	White
<b>612-2001</b>	Red
<b>612-2002</b>	Yellow
<b>612-2003</b>	Blue
<b>612-2004</b>	Green
<b>612-2005</b>	Orange

##### Large

<b>612-2100</b>	White
<b>612-2101</b>	Red
<b>612-2102</b>	Yellow
<b>612-2103</b>	Blue
<b>612-2104</b>	Green
<b>612-2105</b>	Orange

**Stock #**      **Color**

#### Wide 5" Band

##### Medium

<b>612-2500</b>	White
<b>612-2501</b>	Red
<b>612-2502</b>	Yellow
<b>612-2503</b>	Blue
<b>612-2504</b>	Green
<b>612-2505</b>	Orange

##### Large

<b>612-2600</b>	White
<b>612-2601</b>	Red
<b>612-2602</b>	Yellow
<b>612-2603</b>	Blue
<b>612-2604</b>	Green
<b>612-2605</b>	Orange

### Jaw Style Wet Mop Handle

Securely hold wet mop in place for effective cleaning. Use with 5" wide band mops only. 60" fiberglass handle with plastic head.

**Stock #**      **Color**

<b>618-7089</b>	White
<b>618-7068</b>	Red
<b>618-7092</b>	Yellow
<b>618-7066</b>	Blue
<b>618-7073</b>	Green
<b>618-7093</b>	Black
<b>618-7095</b>	Orange
<b>618-7098</b>	Purple



### Wet Mop Handle

Quick-Release™ model minimizes contamination, hands never touch the dirty mop. Use with 1.25" or 5" wide band mops. 60" fiberglass handle with plastic head.

<b>618-6037</b>	White
<b>618-6837</b>	Red
<b>618-6937</b>	Yellow
<b>618-6737</b>	Blue
<b>618-6337</b>	Green
<b>618-6607</b>	Brown
<b>618-6217</b>	Black
<b>618-6517</b>	Orange
<b>618-6917</b>	Purple





## Hard Coat 19 Floor Finish

Excellent in high traffic areas. Durable mark-resistant appearance for extended wear. Dries quickly, non-yellowing and resists film penetration by dirt and soil.

Stock #	Size	Packaging
270-2035	(4) 1-gal/ca	CA
270-2040	5-gal pail	PA




## Citra-Blaze 535 Citrus Based Degreaser

Natural water based cleaning solvents and detergents clean dirt, oil and grease easily. Great smelling natural citrus scent. Can be used with automatic scrubber or mopped on floor.

Stock #	Size	Packaging
270-2020	(4) 1gal/ca	CA




## MARVALOSA Multi-Purpose Cleaner and Deodorizer

Clean and deodorize in a single step. Effectively clean dirt, light oils, smudges and smears. Rinses free from surfaces—no residue. Highly concentrated.

Stock #	Size	Packaging
270-2030	(4) 1-gal/ca	CA




## Green Kleen Multi-Purpose Cleaner Degreaser

Non-butyl based degreaser and cleaner for fast cleaning of grease, grime and buildups. Contains no harmful alkali or acid. Can be used with automatic scrubber or mopped on floor.

Stock #	Size	Packaging
270-2010	(4) 1-gal/ca	CA
270-2015	5-gal pail	PA




## UNO Cleaner & Disinfectant

Cleaner/deodorizer, disinfectant, fungicide, mildewstat and virucide all-in-one. Cleans, disinfects and deodorizes in a single step. EPA registered. Lemon scent.

Stock #	Size	Packaging
270-2215	(4) 1-gal/ca	CA




## Blaze 8 Cleaner Degreaser 8% Butyl

Cut through heavy build-ups quickly for fast cleaning. Removes grease, oils and soils with ease. Can be used with automatic scrubber or mopped on floor.

Stock #	Size	Packaging
270-2000	(4) 1-gal/ca	CA
270-2005	5-gal pail	PA




## Economy Wet Floor Signs

Two-sided sign made of economical polypropylene. Specially contoured feet minimize contact with floor and floor finishes. Reads "Caution Wet Floor" in English, Spanish and German. Yellow. 25"H x 11"W.

Stock #  
618-6145




## Hurricane™

A 360° fan at the base of the unit dries up to a 15' diameter (177 sq. ft.) decreasing your floor drying time by up to 90%, and reducing the wet floor turnaround time to as little as 5 minutes. Battery lasts for up to 12 hours of use. Replacement battery, replacement AC charger, scent cartridges, and warning sign sold separately.

Stock #  
336-7100



## Floor/Carpet Dryer

Keep your facility and warehouse floors dry during the wet and snowy seasons with this powerful air mover, floor/carpet dryer. Multiple position settings for direct airflow and you can daisy chain up to 3 units for maximum efficiency. Delivers up to 2,400 CFM with an energy efficient, 3-speed motor. Compact, lightweight, and stackable for convenience. Comes with a 21' power cord in safety orange.

Stock #	Model
354-2460	AM2400D Floor Dryer




**Dust Mops & Absorbents**

**Cotton Dust Mop**

Great for dust control in industrial applications. Pre-laundered and ready to use. Key-slot style with ties. Easily laundered.



Stock #	Color	Stock #	Color
<b>24"L x 5"W</b>			
612-4500	White	612-6500	White
612-4505	Red	612-6505	Red
612-4510	Yellow	612-6510	Yellow
612-4515	Blue	612-6515	Blue
612-4520	Green	612-6520	Green
612-4525	Orange	612-6525	Orange
<b>36"L x 5"W</b>			
612-5500	White		
612-5505	Red		
612-5510	Yellow		
612-5515	Blue		
612-5520	Green		
612-5525	Orange		

**Dust Mop Handle**

Easily and securely attaches to dust mop frames. Sliding collar locks handle into position allowing for 360° action. 60".

Stock #	Color
618-7083	White
618-7081	Red
618-7084	Yellow
618-7080	Blue
618-7082	Green
618-7085	Black
618-7086	Orange
618-7087	Purple



**SPARTA**

**Pretreated Cut-End Disposable Dust Mop**

Pretreated yarn provides increased dust pickup which saves time and labor. High strength backing for long wear. Natural. 12/case.

Stock #	Size
612-6624	24"L x 5"W
612-6636	36"L x 5"W
612-6648	48"L x 5"W



**Pretreated Disposable Dust Mop in a Box**

High strength woven backing provides long wear while pretreated yarn provides great performance. 5"W. Natural.

Stock #	Packaging
612-6600	40'/box



**Dust Trax Dust Mop Treatment**

Control dust on virtually any hard surface. Turns dust mops into dust magnets! Oil-based formulation makes pretreating dust mops and cloths quick and easy.

Stock #	Size	Packaging
270-2121	(12) 14-oz cn/ca	CA



**Dust Mop Frames**

Rust resistant frames constructed of 1/4" steel rods. Dust mop handle easily and securely attaches to dust mop frames. Sliding collar locks handle into position allowing for full 360° action. Handle sold separately.

Stock #	Size
612-1024	24"L x 5"W
612-1036	36"L x 5"W
612-1048	48"L x 5"W



**Spill Control—Take care of a spill like it never happened!**

All-Purpose Absorbent is a natural renewable cotton plant bi-product which is engineered to perform fast pick-up of both water and oil based spills. Minimizes odor and fully suppresses flammability. Non-toxic plus EPA compliant for spill disposal. Changes pH levels to safe handling. USDA certified biobased product. Perfect for use in the plant or in the office as it can be used on spills of virtually any type including: gasoline, latex paint, ammonia, water, bodily fluids, battery acid, motor oil, bleach, and liquid soap.

Stock #	Description
698-0000	2-lb All-Purpose Carton
698-0004	20-lb All-Purpose Pail
698-0008	4' All-Purpose Sock
698-0012	Wall Mount Spill Station



**SpillEater**  
The Natural Spill Absorbent

## Floor Sweeping Compound

An economical sweeping compound to help keep dust down and aid in dirt pick-up.

**Stock #**      **Packaging**

### No-Grit Compound

**542-6080** 50-lbs/box

**542-7001** 200-lbs/drum

### Sand-Based Compound

**542-6025** 50-lbs/box

**542-7000** 300-lbs/drum



## BEXT® Pro Heated Portable Extractor

Superior deep extraction performance with instant continuous heating capabilities. Features an ergonomic design allowing for easier loading and transporting. The unique transport handle design makes maneuverability, and control around facilities a breeze. Handle on top of tank assists in lifting loading/unloading and acts as a vacuum hose guidance system. 15' hose with AquaWand™, 100 psi pump, 12.5-gallon solution tank and 11-gallon recovery tank.

**Clarke**



**Stock #**      **Model**      **Heater**

**354-2453** EX20 100H 1750W

## GO2 Hydrogen Peroxide Multi-Purpose Cleaner

Great choice for general carpet spotting and extracting. Pretest first for color fastness. Leaves carpet fibers clean, soft and deodorized.

**Stock #**      **Size**      **Packaging**

**270-2115** (2) 1-gal/ca CA

**Nyco**



## Triad Extraction Cleaner

Low foam, multi-use cleaning solution for carpets, rugs and upholstery. Low pH formulation recommended for use on all carpets. Test for color fastness by applying undiluted solution.

**Stock #**      **Size**      **Packaging**

**270-2195** (4) 1-gal/ca CA

**Nyco**



## High-Wall™ Disinfectant Mat™

For applications requiring deeper foot immersion, try our High-Wall mat. A full 2" height guarantees that sanitizing solution contacts sole, sides and welt area of boots, penetrating even into deep treads. For safety and compliance, items 430-2006 and 430-2007 feature a 2" ramp edge with a yellow stripe all around with message FOOTBATH USE REQUIRED. Made from heavy-duty rubber, holds up to 20-quarts of solution, and measures 32" x 39" x 2" Deep.



**Stock #**      **Description**      **Color**

**430-2006** Standard Black w/Yellow Stripe

**430-2007** Chlorine Resistant Black w/Yellow Stripe

## Antimicrobial High-Wall™ Disinfectant Mat™

This is the footbath you've been looking for. The Antimicrobial Agent manufactured into the mat will not support the growth of unwanted microorganisms such as Listeria monocytogenes, Salmonella enteritidis and E.coli O157:H7. Holds up to 20-Quarts of solution and measures 32" x 39" x 2" deep.



**Stock #**      **Color**

**430-2051** Solid Yellow

## Wonder-Pro™ Wiper Mat

Classic plush olefin mat designed for interior areas with light-medium traffic of 125-500 person per day. Protects floors with vinyl backing moisture barrier and works as a wiper. Wonder-Pro plays a major role in the retention of water and fine dust so less contaminants enter the building. Additional sizes, rolls, and colors available.



**Stock #**      **Color**

### 2' x 3'

**430-2463** Castellan Red

**430-2462** Marlin Blue

**430-2460** Pebble Brown

**430-2461** Charcoal

### 3' x 4'

**430-2467** Castellan Red

**430-2466** Marlin Blue

**430-2464** Pebble Brown

**430-2465** Charcoal

**Stock #**      **Color**

### 3' x 5'

**430-2471** Castellan Red

**430-2470** Marlin Blue

**430-2468** Pebble Brown

**430-2469** Charcoal

### 3' x 6'

**430-2472** Pebble Brown

**430-2473** Charcoal

**430-2474** Marlin Blue

**430-2475** Castellan Red



## Scotch-Brite™ Pads

### Scotch-Brite™ Light-Duty Cleansing Pad No. 98

Soft, non-woven fibers and mild abrasiveness, gently, but thoroughly, clean most surfaces. Clean glass, stainless steel, chrome, copper, porcelain and ceramic. 6" x 9". White.



**Stock #**      **Packaging**

**456-2018**    20 pads/box

### Scotch-Brite™ Heavy-Duty Scouring Pad No. 86

Tough fibers and abrasives make fast work of heavy-duty cleaning jobs. Replaces scrapers, steel wool and metal sponges. 6" x 9". Dark Green.



**Stock #**      **Packaging**

**456-2009**    12 pads/box

### Scotch-Brite™ Extra Heavy-Duty Pot'N Pan Handler No. 88

Replace metal sponges with this rugged pad. Convenient hand size pad is easy-to-use and easy-to-rinse clean. Effective on heavily encrusted and grimy equipment. 3.5" x 5". Blue.



**Stock #**      **Packaging**

**456-2013**    10 pads/box

### Scotch-Brite™ General Purpose Medium-Duty Scouring Pad No. 96

Original synthetic scouring pad. Ideal for cleaning equipment, walls, counters, railings, floors and stairways. Non-rusting and resilient. 6" x 9". Bright Green.



**Stock #**      **Packaging**

**456-2016**    20 pads/box

### 3M™ Doodlebug™ Pad

Choose the pad that is best suited to your application. Open web easily rinses clean, adding to the life of the pad. 4-5/8" W x 10" L.



**Stock #**      **Description**      **Packaging**

<b>456-2035</b>	Light-Duty, White	5 pads/box
<b>456-2030</b>	Medium-Duty, Blue	5 pads/box
<b>456-2040</b>	Heavy-Duty, Brown	5 pads/box
<b>456-2045</b>	Extra Heavy-Duty, Black	10 pads/box

### 3M™ Doodlebug™ Pad Holder

Special grippers to hold pads firmly in place providing easy attachment and changing of pads. Super-tough swivel threads directly onto standard thread handle on page 5. Handle sold separately. Rust/red/orange color.



**Stock #**

**456-2022**



## Whatever your application...

**There is a 3M™ Scotch-Brite™ product available to meet your needs!**



Each item is designed for a particular task, however, each pad provides the same important features: open web construction which rinses easily; conforms to surfaces, corners and cracks; rust and mildew resistant; no metal fragments; and long-lasting.