

Achieve an Effective Sanitation Program in your Facility with

Footwear & Surface Sanitation Products



Boot Scrubbers

Surface Sanitizing

Doorway Foamers

Disinfectant Mats

Chemicals

Environmental Sampling



Download our Mobile App!

Add your favorite items to your cart with the barcode scanner for an easy and fast ordering experience.



BSX Boot Scrubber™ Series

Each of the BSX Boot Scrubbers use an open, sanitary design which eliminates hidden and hard-to-reach areas that are difficult to clean and can harbor pathogens. Components of each unit can be easily removed for cleaning and inspection. Because it's durable, you can clean and rinse just like any other piece of equipment in your facility.

All units are constructed of solid 304 stainless steel with no hollow parts or painted surfaces to chip or flake. Tool-free brush removal provides fast and easy cleaning. Polypropylene brushes are compatible with most chemicals and are replaceable. Select units utilize venturi injectors to dilute the chemical and apply onto brushes and transferred to boots. Chemicals sold separately.

Manual Boot Scrubber Units

Simply move boot back and forth through the brushes to supply the mechanical scrubbing action. Ideal for low-traffic areas and facilities with limited space. Wet or dry units available. With the wet unit, the system is activated when a user steps onto the platform then the cleaning solution is sprayed onto the boot and brushes.

- 1 user at a time; BSX100: 2 to 6 users per minute, BSX200: 3 to 10 users per minute.
- Wet connection requirements: 3/8" NPTF cold water connection, 50 psi recommended.
- Dimensions; BSX100: 29"L x 16"W x 44"H. BSX200: 30"L x 30"W x 43"H.

Stock #	Description	Unit
764-2451	BSX100 Manual Single Unit—Wet	EA
764-2452	BSX100 Manual Single Unit—Dry	EA
764-2454	BSX200 Manual Walk Through Unit—Wet	EA
764-2453	BSX200 Manual Walk Through Unit—Dry	EA



Single Boot Scrubber Units

Uses two stationary side brushes and one rotating sole brush to thoroughly clean the boot. Ideal for low-traffic areas and facilities with limited/medium open space. The user places one foot at a time into the unit and activates the system by grabbing the hand rail.

- 1 user at a time; 2 to 6 users per minute.
- Connection requirements: 110-volt ac, 15-amp electrical connection required, 3/8" NPTF cold water connection, 50 psi recommended, 1.5" Tri-clamp drain connection.
- 26"L x 20.5"W x 46"H.

Stock #	Description	Unit
764-2455	BSX400 Boot Scrubber Single Unit	EA



Single Boot Scrubber Units with Triple Rotating Brushes

Features two rotating vertical side brushes and one rotating horizontal sole brush. Ideal for low-traffic areas and facilities with limited/medium open space. The user places one foot at a time into the unit and activates the system by grabbing the hand rail.

- 1 user at a time; 2 to 6 users per minute.
- Connection requirements: 110-volt ac, 15-amp electrical connection required, 3/8" NPTF cold water connection, 50 psi recommended, 1.5" Tri-clamp drain connection.
- 24.5"L x 25.25"W x 46"H.

Stock #	Description	Unit
764-2458	BSX600 Single Unit with Triple Brushes—6" Vertical	EA



Chemicals for BSX Boot Scrubber™ Units

Stock #	Description	Packaging	Unit
764-2471	Alpet® No Rinse Quat Sanitizer	5-Gal Pail w/ Spigot	PK
764-8005	BSI-225 High-Foaming All-Purpose Neutral Cleaner	5-Gal Pail	PA
764-8009	BSI-250 High-Foaming All-Purpose Alkaline Cleaner	5-Gal Pail	PA
013-6010	Heads Up 10 Acid Cleaner/Sanitizer	5-Gal Pail	PA

Compact Walk Through Units

A wet, walk-through, dual boot scrubber. Ideal for medium to high-traffic areas and facilities with medium open space. The user activates the system by stepping onto the platform. Two rotating brush options: four side disc brushes and two horizontal sole brushes or three vertical side brushes and two horizontal sole brushes.

- 1 user at a time; 15 to 25 users per minute.
- Connection requirements: 110-volt ac, 15-amp electrical connection required, 3/8" NPTF cold water connection, 50 psi recommended, 2.5" Tri-clamp drain connection.
- 60"L x 43"W x 54"H.

Stock #	Description	Unit
764-2460	BSX800 Compact Walk Through Unit—2.5" Disk	EA
764-2463	BSX800 Compact Walk Through Unit—6" Vertical	EA
764-2028	BSX800 Compact Walk Through Unit—9" Vertical	EA



BSX800

Compact Walk-Through Units with Dual Sole Brushes

A wet, compact, walk-through, sole-only, dual boot scrubber. Ideal for higher traffic areas and facilities with limited/medium open space. User activates the system by stepping onto the platform.

- 1 user at a time; 15 to 25 users per minute.
- Connection requirements: 3/8" NPTF cold water connection, 50 psi recommended, 2.5" Tri-clamp drain connection.
- Electrical Options: 115VAC, single phase, 60 Hz, 19.1A, 230VAC, single phase, 60 Hz, 13.7A, 480VAC, triple phase, 60 Hz, 3.9A
- 63"H x 45"W x 54"L.

Stock #	Description	Unit
764-2033	BSX900 Compact Walk Through Unit—115 V	EA
764-7041	BSX900 Compact Walk Through Unit—230 V	EA
764-2034	BSX900 Compact Walk Through Unit—480 V	EA



BSX900

High Capacity Walk Through Units

A large, walk-through, dual wet boot scrubber. Ideal for high-traffic areas and facilities with plenty of open space. Two rotating brush options: four side disc brushes, two horizontal sole brushes and two long horizontal sole brushes or three vertical brushes, two horizontal sole brushes and two long horizontal sole brushes.

- 3 users at a time; 15 to 25 users per minute.
- Connection requirements: 220-volt ac, single phase, 15-amp electrical connection required, 3/8" NPTF cold water connection, 50 psi recommended, 2.5" Tri-clamp drain connection.
- 54"H x 45"W x 96"L.

Stock #	Description	Unit
764-2465	BSX1000 High Capacity Walk Through Unit—2.75" Disk	EA
764-2025	BSX1000 High-Capacity Walk Through Unit—Sole Only	EA
764-2469	BSX1000 High-Capacity Walk Through Unit—6" Vertical	EA
764-2026	BSX1000 High-Capacity Walk Through Unit—9" Vertical	EA



BSX1000



Boot 'N Shoe Brush

Two specially designed brushes keep work shoes and boots thoroughly cleaned. Brushes flip up to reveal a heavy-duty sole scraper. Anchor its solid metal frame in concrete or secure the frame with one foot while cleaning the other. Measures 14.75"W x 16.5"L x 7"H.

Stock #	Bristle Color	Unit
618-6739	Blue	EA
618-6292	Brown	EA
618-6565	Black	EA



618-6565

HACCP SmartStep™ Footwear Sanitizing System

Reduce cross-contamination from footwear anywhere in your facility with the HACCP SmartStep Footwear Sanitizing Station and the effectiveness of Alpet® D2 or Alpet® D2 Quat-Free Surface Sanitizer. The versatility of the SmartStep stations allow you to set-up multiple units in high-traffic areas or add units as your plant's needs grow. Alpet® D2 and Alpet® D2 Quat-Free 5-gallon pack sold separately.

HACCP SmartStep™ Sanitizing Stations

Foot-operated unit uses compressed air to deliver an atomized spray of Alpet® D2 or Alpet® D2 Quat-Free onto footwear soles. Sanitizing unit is available with or without handle. Handle mounts to the floor to provide a safe and secure handhold when in use.

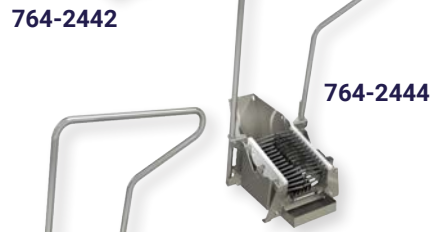
Stock #	Description	Unit
764-2441	Sanitizing Station without Handle	EA
764-2442	Sanitizing Station with Handle	EA



Boot Scrubber

Bolts to the floor to ensure a safe and secure handhold while manually cleaning footwear. Removable tray collects debris, keeping the area clean, and reducing potential contaminations. Brushes are replaceable.

Stock #	Unit
764-2444	EA



Sanitizing Station with Boot Scrubber and Handle

Combine the HACCP SmartStep™ Footwear Sanitizing Station and Boot Scrubber for the complete package! Same benefits as the units listed above.

Stock #	Unit
764-2443	EA



HACCP SmartStep2™ Walk-Through Dual Footwear Sanitizing Unit

Effective for reducing cross-contamination in wet or dry facilities. This foot-operated unit uses compressed air to deliver an atomized spray of Alpet® D2 or Alpet® D2 Quat-Free Surface Sanitizer. Each uses only 0.4-oz of chemical (0.2-oz per boot), yet provides ample coverage to footwear soles. Alpet D2 or Alpet D2 Quat-Free 5-gallon pack sold separately.



Stock #	Unit
764-2029	EA

HACCP Defender™ Footwear Sanitizing Station

A one-way, walk-through design supports traffic flow while controlling pathogens and reducing cross-contamination. An atomized spray provides ample coverage to boot soles, which reduces chemical waste and controls moisture. Adjustable output for optimal volume control with infrared sensor doors and sprayers. Alpet® D2 or Alpet® D2 Quat-Free 5-gallon pack sold separately.



Stock #	Unit
764-2155	EA



Sanitizing Unit Accessories

For convenient refilling from bulk containers. Can be used with the HACCP SmartStep™ Footwear Sanitizing System and HACCP Defender™ Footwear Sanitizing Station.

Stock #	Description	Unit
764-5443	2.5-Gal Secondary Container	EA
764-2203	Alpet® D2 Secondary Container Tag	EA
764-2206	Alpet® D2 Quat-Free Secondary Container Tag	EA



Alpet® D2 Surface Sanitizers

A fast acting, food contact and non-food contact surface cleaner, sanitizer, and disinfectant. It is highly evaporative, non-corrosive, and is ready to use. Kills 99.999% of tested pathogens as a food contact surface sanitizer and kills 99.9% of tested pathogens as a non-food contact surface sanitizer, including rubber footwear. NSF listed D2 classification, Kosher, Pareve, and Halal certified, and EPA registered. Alpet® D2 Quat-Free is approved under the Washington State Department of Agriculture Organic Food Program.

Stock #	Description	Packaging	Unit
Alpet® D2 Surface Sanitizer			
764-5201	4-oz Finger Pump Bottles	48/ca	CA
764-7014	32-oz Bottles with Triggers	12/ca	CA
764-7016	5-Gal Pack with Spigot	--	PK
764-7027	5-Gal Pack with Insert for SmartStep™ and SmartStep2™ Sanitizing Systems	--	PK
764-5203	50-Gal Drum	--	DR
Alpet® D2 Quat-Free Surface Sanitizer			
764-5211	32-oz Bottles with Triggers	12/ca	CA
764-5212	5-Gal Pack with Spigot	--	PK
764-5213	5-Gal Pack with Insert for Smartstep™ and SmartStep2™ Sanitizing Systems	--	PK
764-5210	50-Gal Drum	--	DR



Alpet® D2 Surface Sanitizing Wipes

Ready to use, no rinse, pre-saturated, lintless wiping system for food contact surfaces. Able to clean and sanitize, Alpet® D2 Surface Sanitizing Wipes are available in a heavy-duty 90 count wipe and a 160 count medium-duty wipe. Each canister has a spring-loaded, self-closing lid to help prevent drying. Kosher, Pareve, and Halal certified.



Stock #	Packaging	Unit
Medium-Duty 7.5" x 10"		
764-5162	160 wipes/cn	CN
764-5160	160 wipes/cn; 6 cn/ca	CA
Heavy-Duty 7.5" x 9.5"		
764-5204	90 wipes/cn; 6 cn/ca	CA
764-5206	90 wipes/cn	CN



Refillable Wiping System

Refill and reuse the durable wiping system canister to save money and reduce waste. Add 1-quart of either Alpet® D2, Alpet® D2 Quat-Free, or Alpet® E3 Plus to the dry refills to create the wiping system of your choosing. The spring-loaded lid self closes to help prevent any of the wipes from drying out. Medium-duty wipes measure 7.5" x 10". Heavy-duty wipes measure 7.5" x 9.5".



Dry Refills with Canister

Stock #	Description	Packaging	Unit
764-2317	Medium-Duty	160 wipes/cn; 6 cn/ca	CA
764-7017	Heavy-Duty	90 wipes/cn; 6 cn/ca	CA

Dry Refills without Canister

Stock #	Description	Packaging	Unit
764-2318	Medium-Duty	160 wipes/rl; 6 rl/ca	CA
764-7019	Heavy-Duty	90 wipes/rl; 6 rl/ca	CA

Doorway Foamers

Lafferty Doorway Foamers

Timed entryway foam sanitizers are automated foam applicators for projecting sanitizing chemicals on to floors to help prevent cross-contamination. 120-Volt units operate on compressed air and city water pressure (35 to 125 psi) to draw and blend chemical concentrate into the water stream to create an accurately diluted solution. Rich, clinging foam is created by injecting compressed air into the solution to greatly increase volume and coverage ability. Foam is then projected through the discharge hoses and Spreader™ nozzles. The system timer is user-programmable to meet the needs of any facility. Includes foamer body, hose, nozzles, metering tips, and NEMA rated control box.



Stock #	Description	Compressed Air Requirement
385-8024	For Single 3' Entryway	Up to 3 CFM
385-6476	For Dual Adjacent 3' Entryways	Up to 4 CFM
385-6420	For 8' to 16' Wide Overhead Doorways	Up to 5 CFM



Foam-iT™ Single Doorway Foamer

120-Volt, air operated (40 to 80 psi) doorway foamer that draws from a pre-mixed chemical solution and covers a 9' x 4' area with a flow rate of 2-gallons/minute. Requires 10 to 100 psi water. Operates using a repeat cycle timer and includes complete foam unit, single-line foam nozzle with spray tip, mounting hardware for control box and nozzle, and a 10' discharge tubing for nozzle.

Stock #	Description	Compressed Air Requirement
341-7003	Model DS1 with Santoprene seals	5-10 CFM



Chemicals

Enrich No.299

Liquid, non-phosphated, self-foaming chlorinated alkaline cleaner ideal for cleaning dairy and food processing plants. Non-phosphated to reduce effluent phosphorous levels.



Stock #	Packaging	Unit
775-4015	5-gal pail	PA
775-4014	55-gal drum	DR

Security Floor Treatment

Easy to apply granular alkali product treats floors, drains, and entryways with the cleansing power of hydrogen peroxide and oxygen. No moisture needed! Non-corrosive to floors and equipment. Environmentally friendly. Ships LTL truck.



Stock #	Packaging	Unit
013-5000	100-lb drum	DR
013-5001	400-lb drum	DR

Deptal MCL

Chlorinated self-foaming cleaner with alkali builders, water conditioners, dispersants, and biodegradable surfactants. This product has dense foam, rinses easily, and has excellent deodorizing action.

Stock #	Packaging	Unit
019-5121	5-gal pail	PA
019-5124	55-gal drum	DR

Passage No. 323 Floor Treatment

Designed to maintain cleanliness after cleaning, this low foaming floor treatment uses moisture to liberate hydrogen peroxide and quaternary amine complex. Penetrates crevices and other hard to clean areas. Ships LTL truck.

Stock #	Packaging	Unit
775-4017	495-lb drum	DR

Disinfectant Mat™ Sanitizing Footbath

Stop contamination at the door with this heavy-duty black rubber mat with fingers to clean shoe soles while a solution sanitizes them. Holds up to 5-quarts of solution and measures 24" x 32" x 7/8" deep.



Stock #	Description	Unit
430-2000	Chlorine Resistant	EA
430-2005	Standard	EA

Antimicrobial High-Wall™ Disinfectant Mat™

Features antimicrobial agents manufactured into the mat, and will not support the growth of unwanted microorganisms such as Listeria Monocytogenes, Salmonella Enteritidis, and E.coli O157:H7. Holds up to 20-quarts of solution and measures 32" x 39" x 2" deep.



Stock #	Color	Unit
430-2051	Solid Yellow	EA

High-Wall™ Disinfectant Mat™

For applications requiring deeper foot immersion. A full 2" height guarantees that the sanitizing solution contacts sole, sides, and welt area of boots, penetrating even into deep treads. For safety and compliance, items 430-2006 and 430-2007 feature a 2" ramp edge with a yellow stripe all around with message "FOOTBATH USE REQUIRED." Made from heavy-duty rubber, holds up to 20-quarts of solution, and measures 32" x 39" x 2" deep.



Stock #	Description	Color	Unit
430-2006	Standard	Black w/ Yellow Stripe	EA
430-2007	Chlorine Resistant	Black w/ Yellow Stripe	EA
430-2072	Chlorine Resistant	Solid Orange	EA
430-2076	Chlorine Resistant	Solid Blue	EA
430-2078	Chlorine Resistant	Solid Red	EA

Sanitation Verification Test Strips



Stock #	Description	Packaging	Unit
387-3294	Iodine, 12-100 ppm	200 strips	VI
387-3425	Chlorine, 10-200 ppm	200 strips	VI
387-3031	Free Chlorine, 0-800 ppm	50 strips	VI
387-3297	Quaternary Ammonium, 50-400 ppm	100 strips	VI
387-3010	Peracetic Acid 0-160 ppm	50 strips	VI
387-3000	Peracetic Acid 0-1000 ppm	50 strips	VI

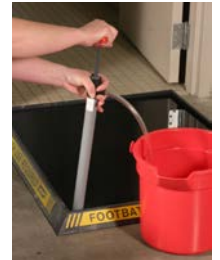
Chemicals

All sanitizers are concentrated and must be diluted before use in footbath. Follow label directions for appropriate dilutions.

Stock #	Description	Packaging	Unit
019-5730	Chlorine	2.5-gal	PK
019-5103	Acid	55-gal	DR
019-7040	Quaternary Ammonium	5-gal	PK

Hand Pump and Pail

Designed specifically for use with our High-Wall™ Disinfectant Mat™, this pump fits securely into a notched-out area in the bottom of the mat for easy draining. Pump expels up to 8-oz of solution per stroke. 14-quart capacity bucket features a durable steel handle and built-in pour spout.



Stock #	Description	Unit
065-2918	Hand Pump	EA
142-2122	Red 14-qt Bucket	EA

Footbath Sign

Stock #	Description	Unit
180-2539	Rigid Plastic 7" x 10"	EA



Accessories

Microorganism Detection

Hygiena's MicroSnap™ platform bridges the time gap between ATP and bacterial culture results with convenient, same-shift test results for E.coli, Coliform, Enterobacteriaceae, and TVC. MicroSnap tests are read by the EnSURE™ monitoring system and results are recorded with SureTrend™ software. EnSURE measures both ATP and organism tests, enabling food and beverage processors to acquire an accurate status of plant hygiene and product quality during the same working day or shift. Knowing test results sooner prevents recalls, reduces waste, shortens hold time, and enables a quicker response when contamination issues arise. Powered by (2) AA batteries, sold separately.

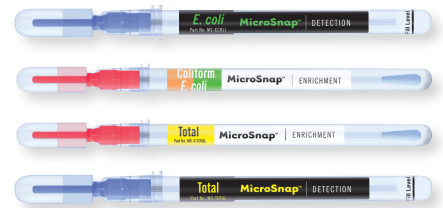
Stock #	Description	Packaging	Unit
---------	-------------	-----------	------

Instrument

332-3300	EnSURE™ Luminometer for ATP Testing	--	EA
-----------------	-------------------------------------	----	----

Microorganism Detection

332-3320	MicroSnap™ E.coli and Coliform Detection Device	100/bx	BX
332-3340	MicroSnap™ E.coli and Coliform Enrichment Device	100/bx	BX
332-3350	MicroSnap™ E.coli and Coliform Enrichment Broth	100/bx	BX
332-3360	MicroSnap™ Total TVC Enrichment Device	100/bx	BX
332-3370	MicroSnap™ Total TVC Detection Device	100/bx	BX
332-3390	MicroSnap™ Enterobacteriaceae Detection Device	100/bx	BX
332-3380	MicroSnap™ Enterobacteriaceae Enrichment Device	100/bx	BX



Hygiena™ InSite™ Listeria Environmental Test

A quick and easy in-house test at an economical price. Designed to monitor the presence of common Listeria spp (L.innocua, L.ivanovii, L.welshmeri, L.monocytogenes) in environmental samples from food processing areas. This test indicates the presence of Listeria species without confirming pathogenic organisms. A color change from yellow to light brown/black in as little as 24 hours is considered presumptive positive. An incubator is required, sold separately.

Stock #	Packaging	Unit
---------	-----------	------

332-3118	50/bx	BX
332-3107	100/ca	CA



Hygiena™ InSite™ Salmonella Environmental Test

A quick and easy test for the detection of Salmonella species (spp) in food processing environments. Contains a liquid medium formulated with selective growth enhancers and chromogenic compounds. A color change from purple to bright yellow in 24 to 48 hours is presumptive positive for Salmonella spp. InSite Salmonella is a self-contained screening test which is easy to perform while reducing wait time, labor costs, and materials. An incubator is required, sold separately.

Stock #	Packaging	Unit
---------	-----------	------

332-3120	50/bx	BX
-----------------	-------	----



Neogen® Petrifilm™ Environmental Listeria Count Plates (EL)

Designed to detect Listeria species from environmental samples and to increase the efficiency of monitoring plant sanitation. This count plate is a sample-ready culture medium containing selective agents, nutrients, a cold water-soluble gelling agent, and a chromogenic indicator. Requires a spreader (460-3498) sold separately.

- Facilitates the detection of the majority of environmental Listeria.
- Results within 29 hours.

Stock #	Packaging	Unit
---------	-----------	------

460-3447	50/bx	BX
460-3448	200/ca	CA



Neogen® Clean-Trace™ Hygiene Monitoring & Management System

Provides you with quick, accurate results by measuring the effectiveness of your cleaning and sanitation programs. The powerful and flexible software has a redesigned dashboard, making it easy to collect, store, and retrieve test result reports. It turns your data into information to help you identify root causes and take corrective actions quickly. The new, convenient wireless and networking capabilities also enable you to download photos to the luminometer.

Features of Luminometer:

- Stands up to harsh manufacturing environments.
- Durable, impact resistant casing.
- User-friendly touch screen.
- Flip-out foot allows device to stand upright.
- Ergonomic design allows for one-handed operation, regardless of hand size.
- Self-diagnostic check on start-up.
- Secure data cannot be changed on hardware.

Features of Software:

- Redesigned dashboard consolidates information.
- Common tasks—1 click access to key features.
- Easily randomize test point in sample plans.
- Simplified data displays help you make more educated decisions.
- Confidently identify trouble spots to improve cleaning and reduce downtime for faster production start-up.
- Convenient, audit ready reports.



Stock # Description

351-3400	Neogen Clean-Trace LM1 Luminometer
351-3904	Two-Year Extended Warranty



351-3400

Neogen® Clean-Trace™ Surface ATP Test Swabs

With its unique liquid stable enzyme, this test offers superior levels of repeatability. Its performance and incredible simplicity are why customers throughout the world have put the Neogen Clean-Trace system at the heart of their hygiene monitoring programs. Results are measured in the Neogen Clean-Trace LM1 Luminometer and provided in relative light units (RLU). Use 351-3210 Positive Control for verification (sold separately).

Stock # Packaging Unit

351-3038	100/ca	CA
-----------------	--------	----

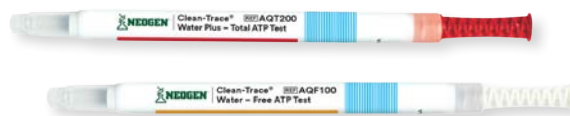


Neogen® Clean-Trace™ Water ATP Test Swabs

A dedicated ATP water test that is designed to prevent sampling inaccuracy inherent in collecting a water sample with a swab. Its overall simplicity makes it a powerful addition to your hygiene program. Results are measured in the Neogen Clean-Trace LM1 Luminometer and provided in relative light units (RLU).

Stock # Description Packaging Unit

351-3040	Water Free ATP	100/ca	CA
351-3039	Water Total ATP	100/ca	CA



Neogen® Clean-Trace™ ATP Positive Control

Validate your test results by using the predetermined amount of adenosine triphosphate (ATP) to provide predictable results. 351-3210 can also be used for the Neogen Surface protein allergen Swabs (351-3062) and the Neogen Surface Protein Plus Swabs (351-3041), sold separately.

Application: Surface Control

Stock # Packaging Unit

351-3210	10/ca	CA
-----------------	-------	----

Application: Water Control

Stock # Packaging Unit

351-3095	10/ca	CA
-----------------	-------	----



Hygiena™ EnSURE™ Touch Luminometer

Provides rapid and accurate sanitation verification to support your FSMA program. Featuring a 5" touch screen, wireless sync technology, and cloud-based software, the EnSURE Touch is designed to adapt to your workplace and provides the data you need for complex multi-location operations, audit and risk management, and recall prevention.

Can help you:

- Verify sanitation of surfaces, liquids, and product testing in as little as 10 seconds.
- Test and compare the effectiveness of sanitation products and procedures.
- Train and monitor sanitation crew and QC/QA employees.
- Support SSOP and objectively prove cleaning standards have been met.
- Quickly identify when replaceable parts like belts and brushes should be replaced.
- Identify problem areas in your facility that need more attention.
- Provide on-the-spot training and feedback.



In order to:

- Meet FSMA, GFSI, and ISO standards.
- Protect your brand reputation.
- Avoid financially damaging lawsuits.
- Reduce risk of food poisoning, facility closure, and product recalls.
- Lower facility testing costs by bringing testing in-house.
- Provide evidence of due diligence—HACCP.

Stock #	Description	Packaging	Unit
---------	-------------	-----------	------

Instrument

332-3600	EnSURE™ Touch Luminometer	--	EA
-----------------	---------------------------	----	----

ATP Surface Monitoring

332-3111	UltraSnap™ ATP Swabs	100/bx	BX
-----------------	----------------------	--------	----

ATP Water Monitoring

332-3210	AquaSnap™ ATP Swabs—Total	100/bx	BX
-----------------	---------------------------	--------	----

332-3178	AquaSnap™ ATP Swabs—Free	100/bx	BX
-----------------	--------------------------	--------	----

Unit Calibration

332-3601	EnSURE™ Touch CalCheck LED	--	KT
-----------------	----------------------------	----	----

Neogen® Sponge-Stick

Allows you to sample without directly handling the sponge. Also makes it easier to reach into drains, pipes, and around equipment. Features a biocide-free cellulose sponge that maintains organism viability. Available in wet or dry formats with and without gloves to fit many applications.



Stock #	Description	Packaging	Unit
351-3025	10 mL Buffered Peptone Water	100/ca	CA
351-3110	10 mL Lethen Broth	100/ca	CA
351-3026	10 mL Lethen Broth w/ 2 Gloves	100/ca	CA
351-3995	10 mL Neutralizing Buffer	100/ca	CA
351-3027	10 mL Neutralizing Buffer w/ 2 Gloves	100/ca	CA
351-3065	10 mL DE Neutralizing Broth	100/ca	CA
351-3028	Dry Sponge in Bag Only	100/ca	CA

Neogen® Hydrated-Sponges

Pre-hydrated with a variety of buffers for quick sample collection. These sponges are pre-moistened for convenience, are durable, and the biocide-free cellulose maintains organism viability. 18-oz bag unless otherwise noted.



Stock #	Description	Packaging	Unit
351-3300	Dry Sponge in Bag	100/ca	CA
351-3029	10 mL Buffered Peptone Water	100/ca	CA
351-3030	10 mL Buffered Peptone Water w/ 2 Gloves	100/ca	CA
351-3031	10 mL Lethen Broth	100/ca	CA
351-3032	10 mL Lethen Broth w/ 2 Gloves	100/ca	CA
351-3303	10 mL Neutralizing Buffer	100/ca	CA
351-3302	10 mL Neutralizing Broth w/ 2 Gloves	1/ea	EA
351-3301	10 mL Neutralizing Buffer w/ 2 Gloves	100/ca	CA
351-3306	10 mL Neutralizing Buffer w/ 24-oz Bag and 2 Gloves	100/ca	CA

Neogen® Extendable Pole

Perfect accessory to use with Neogen Environmental Sponge-Sticks. Telescoping pole provides a convenient way to reach locations up to 8' away.



Stock #	Unit
351-3975	EA



Labplas Sani-Stick

Features a red, pliable handle making it possible to sample those hard-to-reach areas in your plant. The unique design of the handle makes it an added bonus to use; just pinch the handle and it releases the sponge into the 24-oz TWIRL-EM® bag. No need for refrigeration.

Stock #	Description	Packaging	Unit
467-3140	Sani-Stick with Letheen broth	100/ca	CA



NASCO Sponge Pole

Perfect for sampling procedures that require testing surfaces that are difficult to reach such as window ledges, light fixtures, air vent ducts, etc. The adjustable aluminum pole is 6' long and extends to 10'. Includes pack of 10 sterile sponges.

Stock #	Unit
486-3457	EA



Whirl-Pak® Sponge Probe

Works well for those hard-to-reach areas as the sponge adheres to a holder that is screwed onto the handle. Both the sponge and handle are sterile, and the polypropylene sponge and handle fit inside the 24-oz write-on Whirl-Pak® bag. To use, add buffer (sold separately) of your choice to the bag to hydrate sponge. Once sampling is complete, simply insert the sponge back into the bag, unscrew the handle and discard, close and send into the lab for testing.

Stock #	Packaging	Unit
486-3076	50/bx	BX



Whirl-Pak® Speci-Sponge® Bags

Designed for environmental surface sampling, work areas, equipment, animal carcasses, and any other place where testing for Listeria, Salmonella, E.coli, and other foodborne pathogens is required. The pre-moistened sponges contain neutralizing buffer with sodium thiosulfate to neutralize residual chlorine sanitizer, or you can choose bags without buffer and add letheen broth diluent (443-3002). To use, simply open the 18-oz bag, moisten the sponge, wipe surface to obtain sample, then reseal bag, and send to the laboratory.

Stock #	Description	Packaging	Unit
486-3189	Speci-Sponge® Bags with Dry Sponge	100/bx	BX
486-3392	Speci-Sponge® Bags with Dry Sponge and Sterile Gloves	100/bx	BX
486-3423	Pre-Moistened Speci-Sponge® Bags with Sterile Gloves	100/bx	BX
486-3422	Pre-Moistened Speci-Sponge® Bags	100/bx	BX



Whirl-Pak® Hydrated PolySponge™ Bags

Make environmental surface sampling faster and easier with these pre-moistened bags. The durable high-density polyurethane sponge is ready to use and resists tearing and fraying. Each sponge is packed in a sealed 18-oz (532 mL) write-on bag and is hydrated with 16 mL of HiCap™ Neutralizing Broth and terminally gamma processed to guarantee sterility. Box contains five foil pouches with 20 sponges each for a total of 100 sponges. Bags are 9"L x 4"W (11.5 x 23 cm) with a 2.5 mil (.064 mm) thickness. Has a two-year shelf-life with ambient storage at 36° to 86°F (2° to 30°C).

To use the sponge, tear open the top of the Whirl-Pak® bag, squeeze out any excess HiCap Neutralizing Broth, swab the surface, insert the sponge back into the bag, fold the top of the bag over three or more times, and bend in the wire tabs to close, then send to a lab for testing.

Stock #	Description	Packaging	Unit
486-3881	With Gloves	100/bx	BX
486-3880	Without Gloves	100/bx	BX
486-3879	Hydrated Polyprobe	100/bx	BX



Environmental Sampling

Neogen® Quick Swabs

Ready to use environmental swab system consists of a 5" rayon-tipped swab which contains letheen neutralizing buffer to facilitate recovery of bacteria. The swabs can be used wet or dry to sample surfaces and quickly deliver 1.0 mL of sample onto a Neogen Petrifilm™ Plate. Handy vinyl-covered wire rack which holds up to 50 swabs is sold separately.



Stock #	Description	Packaging	Unit
460-3432	Quick Swab	50/bx	BX
460-3434	Quick Swab	250/ca	CA
446-3340	Swab Rack	1/ea	EA

Call Nelson-Jameson's Lab team or visit nelsonjameson.com to learn more about our full line of environmental & cleaning verification products.

Hygiena™ Q-Swab™ Environmental Swab Collection System

Save time and money by eliminating the need for pipettes and broth preparation. Q-Swab is a ready to use dilution and delivery device used in the food and beverage industry for environmental surface sampling. Using patented Snap Valve™ technology, broth is released down the swab shaft, neutralizing residue sanitizers, and facilitating recovery of bacteria. The sample is then ready to be poured onto media or streaked onto agar plates for culturing. Q-Swabs can be used either wet or dry, and have a 12-month shelf life.



Stock #	Description	Packaging	Unit
332-3999	Swabs with Buffered Peptone Water	250/bx	BX
332-3200	Swabs with Letheen Broth	250/bx	BX

Value-added distributor to food processors

At Nelson-Jameson, your success drives us.

At Nelson-Jameson, we leverage our in-depth food processing expertise, innovative solutions, and selfless customer service to empower the industry and create an exceptional partner experience.

- Food Processing Expertise
- Strategic Locations & Expert Logistics
- Comprehensive Solutions
- Training & Education
- Service & Repair
- Inventory Solutions



We proudly serve as your go-to partner, today and into the future.

76 Years In Business

1K+ Manufacturing Partners

78K+ Products Available

DELIVERING THE EXCEPTIONAL™

800-826-8302

sales@nelsonjameson.com

nelsonjameson.com