

Whirl-Pak® Product & Usage Catalog

Providing quality bags that keep your samples safe, for results you can trust.



Standard Bags

Write-On Bags

Filter Bags

Stand-Up Bags

Sponge Bags

Specialty Bags



Download our Mobile App!

Add your favorite items to your cart with the barcode scanner for an easy and fast ordering experience.



WHIRL-PAK®
Filtration Group

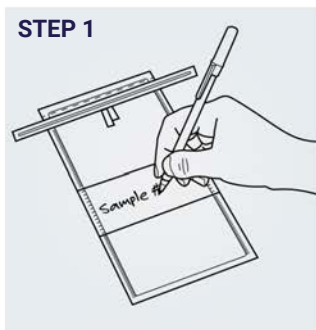
Whirl-Pak® Product & Usage Catalog

Ideal for water sampling, dairy, environmental, food and beverage, forensic science, genetics, industrial markets, medical, pharmaceutical, research, soil, surface, veterinary, and biomedical industries or environments.

Whirl-Pak® Features:

- **Puncture-Proof Closure Tabs:** Eliminates sharp points that could puncture the bags, scratch your hands, or puncture gloves.
- **Guaranteed Sterilization:** +1 Sterilization process of sterilizing sealed cartons of Whirl-Pak bags after manufacturing, which is completed at an independent ISO-certified facility.
- **Traceable Sterility:** Download sterility certificates from whirl-pak.com using the lot number and master number on every box.
- **Film:** Exceptionally clear film and superior strength by using co-extrusion low-density and linear low-density, virgin polyethylene.
- **Leak-Proof Closure:** Whirling or folding the bag over three times and securing with the closure tabs creates a leak-proof sampling container.
- **Reduced Storage and Shipping:** Whirl-Pak bags can save you money as they require less space vs. other sampling containers, which saves on shipping, storage, and waste costs.

How Does Whirl-Pak® Work?



Label your sample if using a write-on bag.



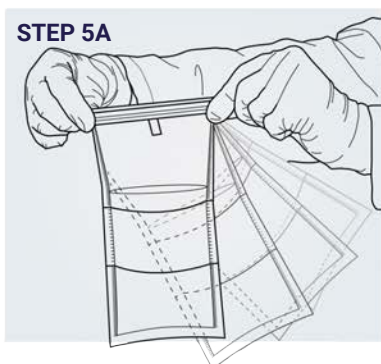
To open, tear off the top along the perforation.



Use the Tyvek® pull tabs to open without contamination.



Place sample in bag. Perfect for liquids or solids.



Hold bag by the tabs and whirl three to four times to make a seal.



Or, fold the tab over tightly three to four times to close.



Secure closure, bend wire ends.



Or, bring the two wire ends together and twist them.

Standard Bags

Popular throughout the food industry, sample bags are a convenient, low-cost way to handle liquid or solid samples. Leakproof and airtight, they occupy a fraction of the space of rigid containers and offer easier disposal. 500 bags/box.

Stock #	Wire Style	Capacity	Size	Thickness	Unit
486-3009	Round	2-oz	3"W x 5"L	2.25 mil	BX
486-3010	Round	4-oz	3"W x 7.25"L	3 mil	BX
486-3992	Round	7-oz	3.75"W x 7"L	3 mil	BX
486-3014	Round	13-oz	5.25"W x 7.5"L	3 mil	BX
486-3015	Round	18-oz	4.5"W x 9"L	2.5 mil	BX
486-3020	Round	24-oz	6"W x 9"L	3 mil	BX
486-3016	Round	24-oz	6"W x 9"L	4 mil	BX
486-3017	Round	27-oz	5"W x 12"L	3 mil	BX
486-3023	Round	36-oz	5"W x 15"L	3 mil	BX
486-3027	Round	42-oz	6"W x 15"L	3 mil	BX
486-3022	Round	55-oz	7.5"W x 12"L	3 mil	BX
486-3998	Round	69-oz	7.5"W x 15"L	3 mil	BX



Write-On Bags

Write-on strip makes sample identification easier and more convenient. Easily write on the strip with a regular ballpoint pen, pencil, or felt-tip marker. The paper-like finish virtually eliminates ink smearing.

Stock #	Wire Style	Capacity	Size	Thickness	Packaging	Unit
486-3006	Round	2-oz	3"W x 5"L	2.25 mil	500 bg/bx	BX
486-3339	Flat	4-oz	3"W x 7.25"L	3 mil	500 bg/bx	BX
486-3011	Round	4-oz	3"W x 7.25"L	2.25 mil	500 bg/bx	BX
486-3099	Round	7-oz	3.75"W x 7"L	2.5 mil	500 bg/bx	BX
486-3003	Round	13-oz	5.25"W x 7.5"L	2.5 mil	500 bg/bx	BX
486-3018	Round	18-oz	4.5"W x 9"L	2.5 mil	500 bg/bx	BX
486-3341	Flat	18-oz	4.5"W x 9"L	2.5 mil	500 bg/bx	BX
486-3019	Round	24-oz	6"W x 9"L	3 mil	500 bg/bx	BX
486-3196	Round	24-oz	6"W x 9"L	4 mil	500 bg/bx	BX
486-3021	Round	27-oz	5"W x 12"L	3 mil	500 bg/bx	BX
486-3239	Round	52-oz	7" W x 13" L	4 mil	500 bg/bx	BX
486-3195	Round	55-oz	7.5"W x 12"L	4 mil	500 bg/bx	BX
486-3515	Round	69-oz	7.5"W x 15"L	3 mil	500 bg/bx	BX
486-3445	1 Flat, 1 Round	92-oz	10"W x 15"L	4 mil	250 bg/bx	BX
486-3446	1 Flat, 1 Round	123-oz	10"W x 20"L	4 mil	250 bg/bx	BX
486-3184	1 Flat, 1 Round	184-oz	15"W x 20"L	4 mil	100 bg/bx	BX



Filter Bags

Filter layer separates the liquid and solids, allowing for easy pipetting of the sample. Made of extra-heavy polyethylene for use with homogenizer blenders. All bags have a write-on strip and wire closure.

Stock #	Wire Style	Capacity	Size	Thickness	Packaging	Unit
486-3260	Round	7-oz	3.75"W x 7"L	3 mil	250 bg/bx	BX
486-3256	Round	24-oz	6"W x 9"L	4 mil	250 bg/bx	BX
486-3458	No Wire	55-oz	7.5"W x 12"L	4 mil	250 bg/bx	BX
486-3255	Round	55-oz	7.5"W x 12"L	4 mil	250 bg/bx	BX
486-3266	Round	69-oz	7.5"W x 15"L	4 mil	250 bg/bx	BX
486-3262	1 Flat, 1 Round	92-oz	10"W x 15"L	4 mil	100 bg/bx	BX
486-3263	1 Flat, 1 Round	138-oz	15"W x 15"L	4 mil	100 bg/bx	BX
486-3517	1 Round, 1 Flat	184-oz	15" W x 20" L	4 mil	100 bg/bx	BX



Thio-Bags®

Specifically designed for sampling chlorinated water from municipalities, swimming pools, wastewater, and other areas to test for fecal coliforms or other bacteria. Each sterile bag contains a non-toxic, non-nutritive tablet containing active sodium thiosulfate to neutralize chlorine at the time of collection. The bag is EPA approved with a convenient write-on strip. Save time, utility costs, storage space, and disposal costs by replacing other sample containers with this sterilized bag. 100 bags/box.

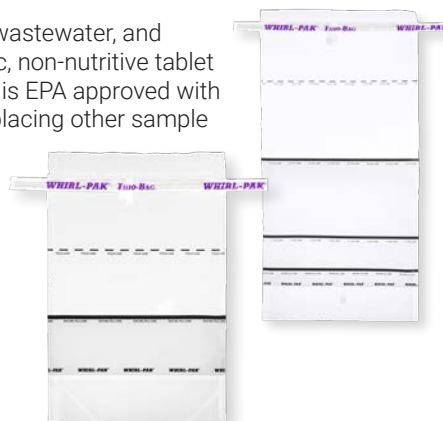
Stock #	Wire Style	Capacity	Size	Thickness	Unit
---------	------------	----------	------	-----------	------

Stand Up Bags

486-3032	Round	4-oz	3"W x 7"L	2.5 mil	BX
486-3222	1 Flat, 1 Round	17-oz	6"W x 9"L	3 mil	BX
486-3007	1 Flat, 1 Round	34-oz	6"W x 15"L	4 mil	BX

Flat Bags

486-3012	Round	4-oz	3"W x 7.25"L	2.25 mil	BX
486-3254	Round	10-oz	4.5"W x 9"L	2.25 mil	BX



Stand Up Bags

Features a white write-on stripe, plus a gusset in the bottom allowing the bag to stand completely on its own.

Stock #	Wire Style	Capacity	Size	Thickness	Packaging	Unit
486-3258	Round	4-oz	3"W x 7.25"L	2.5 mil	500 bg/bx	BX
486-3259	Round	18-oz	4.5"W x 9"L	3 mil	500 bg/bx	BX
486-3261	Round	24-oz	6"W x 9"L	3 mil	500 bg/bx	BX
486-3361	1 Flat, 1 Round	36-oz	5"W x 15"L	4 mil	250 bg/bx	BX
486-3004	1 Flat, 1 Round	42-oz	6"W x 15"L	4 mil	250 bg/bx	BX
486-3451	1 Flat, 1 Round	69-oz	7.5"W x 15"L	4 mil	250 bg/bx	BX
486-3516	1 Flat, 1 Round	138-oz	15"W x 15"L	4 mil	100 bg/bx	BX



Specialty Bags

A broad range of specialty bags for all of your sampling needs. From blackout material for pharmaceutical and clinical needs to the convenient pocket bag, these specialty bags have intentional design components to make sample collection in every industry convenient and more efficient.

Stock #	Capacity	Size	Thickness	Packaging	Unit
---------	----------	------	-----------	-----------	------

Whirl-Pak® Black Bags

486-3472	4-oz	3"W x 7.25"L	2.5 mil	500 bg/bx	BX
486-3418	18-oz	4.5"W x 9"L	2.5 mil	500 bg/bx	BX
486-3024	55-oz	7.5"W x 12"L	2.5 mil	500 bg/bx	BX

Whirl-Pak® Scoop Bag

486-3990	18-oz, 2-oz scoop	4.5"W x 9"L	2.5 mil	50 bg/bx	BX
-----------------	-------------------	-------------	---------	----------	----

Whirl-Pak® USDA Bags

486-3002	24-oz	6" W x 9" L	3 mil	500 bg/bx	BX
-----------------	-------	-------------	-------	-----------	----

Whirl-Pak® NOPA Bags

486-3188	18-oz	6" W x 12" L	4 mil	500 bg/bx	BX
-----------------	-------	--------------	-------	-----------	----



Plain Blender Bags

Designed for quick testing and disposable for samples that do not have to be retained. These bags have a perimeter seal and are sealed at the top. Perforated for easy opening and to protect sterility, which allows for separate handling of each bag.

Stock #	Capacity	Size	Thickness	Packaging	Unit
486-3064	55-oz	7.5"W x 12"L	3.0 mil	1,000 bg/bx	BX
486-3192	184-oz	15"W x 20"L	4.0 mil	250 bg/bx	BX



Nasco Poultry Rinse Bag

Use these polyethylene bags following USDA instructions for poultry sampling and testing for *E. coli*. They are sealed at the top to maintain sterility and perforated for easy opening. Holds small turkeys, chickens, and other similar-sized poultry. 250 bags/box.

Stock #	Size	Thickness	Unit
486-3030	15"W x 20"L	2.0 mil	BX



Whirl-Pak® Hydrated PolySponge Bag

This sterile sampling bag is designed for environmental surface sampling. Polyurethane sponge is premoistened with 10 mL of HiCap™ Neutralizing Broth and is gamma-processed to guarantee sterility. The bags are made of heat-sealed polyethylene for added safety and are ideal for testing for microorganisms on various surfaces. 100 bags/box.

Stock #	Capacity	Size	Thickness	Unit
486-3025	18-oz	4.5" W x 9" L	2.5 Mil	BX



Whirl-Pak® PolyProbe Sponge Bags

Make environmental surface sampling faster and easier with these sponge bags. The durable high-density polyurethane sponge is ready to use and resists tearing and fraying. Each sponge is packed in a sealed write-on bag or hydrated with 16 mL of HiCap™ Neutralizing Broth and terminally gamma-processed to guarantee sterility. The box contains five foil pouches with 20 sponges each for 100 sponges. Has a two-year shelf-life with ambient storage at 36 to 86°F (2 to 30°C).

Stock #	Capacity	Size	Thickness	Unit
---------	----------	------	-----------	------

Dry

486-3878	24-oz	6" W x 9" L	2.5 Mil	BX
----------	-------	-------------	---------	----

Hydrated with HiCap™

486-3879	24-oz	6" W x 9" L	2.5 Mil	BX
----------	-------	-------------	---------	----



Whirl-Pak® Specì-Sponge® Bags

Designed for environmental surface sampling, work areas, equipment, animal carcasses, and any other place where testing for *Listeria*, *Salmonella*, *E. coli*, and other foodborne pathogens is required. The pre-moistened sponges contain neutralizing buffer with sodium thiosulfate to neutralize residual chlorine sanitizer, or you can choose bags without buffer and add your own sterile diluent. 100 bags/box.

Stock #	Capacity	Size	Thickness	Unit
---------	----------	------	-----------	------

Specì-Sponge® Bags with Dry Sponge

486-3189	18-oz	4.5" W x 9" L	2.5 Mil	BX
----------	-------	---------------	---------	----

Pre-Moistened Specì-Sponge® Bags with Sterile Gloves

486-3423	18-oz	4.5" W x 9" L	2.5 Mil	BX
----------	-------	---------------	---------	----

Pre-Moistened Specì-Sponge® Bags

486-3422	18-oz	4.5" W x 9" L	2.5 Mil	BX
----------	-------	---------------	---------	----



Benefits of Converting to Whirl-Pak® Bags From Rigid Plastic Containers:

- Reduces plastic media waste by 95%.*
- Reduce GHG emissions.*
- Reduce water in the manufacturing process.*
- Reduce overall hands-on-time by 76%.*
- Reduce storage space.
- Lower shipping costs.
- Save on disposal costs.

Implementing The Switch To Whirl-Pak Bags:

Step 1—Map out a list of raw materials and finished product testing.

- List your current inventory of bottles or bag sizes.

Step 2—Inform purchasing and services of changes.

- Provide a Whirl-Pak product list to your purchasing agent.
- Notify disposal services of changes—frequency and volume will be reduced.

Step 3—Meet with your teams to capture concerns.

- Potential questions might include:
Will this take more time? How does this impact other portions of my job?
We've always done it this way, why change now?

Step 4—Set up product and testing stations.

- Troubleshooting with your team to address challenges before full implementation.

Federal regulations met: R-Nase, D-Nase, Pyrogen and BPH free and complies with FDA, USDA, HACCP, and EPA.

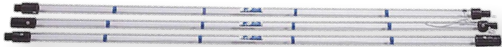
*Case Study: April 2022 - Nasco Sampling LLC.

Nasco Meat/Poultry
Carcass Sampling Kit

Kit contains (2) disposable templates, (1) 10 x 10 cm for meat, (1) 5 x 10 cm for poultry, 25 mL of buffered peptone water, polyethylene gloves, and a sterile Whirl-Pak® Speci-Sponge® bag. 25 tests/kit.



Stock #	Unit
486-3327	KT



Sludge Judge® Collection Tools

Precisely measure settleable solids in liquids. Ideal for wastewater treatment, chemical processing, and food production.

Stock #	Description	Unit
Ultra Series		
486-3029	Ultra Complete Unit	EA
486-3033	Ultra Extension Section	EA
Original Series		
486-3247	Complete Unit	EA
486-3985	Top Section with Rope	EA
486-3986	Extension Section	EA
486-3987	Bottom Section with Rope	EA
Series II		
486-3040	Bottom Section with Valve	EA
486-3041	Complete Unit	EA
486-3042	Extension Section	EA
486-3043	Top Section with Rope	EA
Accessories		
486-3044	Sludge Judge Series II Cleaning Brush	EA
486-3123	Sludge Judge Original and Ultra Series Cleaning Brush	EA
486-3248	Case for Sludge Judge Collection Tools	EA

Milk Sample Ice Chest

Keep milk samples safe with this durable, insulated ice chest. Features a recessed handle, auxiliary storage, and easy-to-clean interior. Perfect for transporting and storing temperature-sensitive items.



Stock #	Unit
486-3059	EA

Carrying & Storage Racks

Easily transport samples from the collection site to the lab, incubation, and storage. Made of 10- and 12-gauge steel fused together for strong joints and straight lines, racks are finished with an electrostatically applied powder coating for a durable and easy to clean finish that stands up to many laboratory materials.

Stock #	Compartments	Unit
486-3122	6	EA
486-3075	12	EA
486-3065	15	EA
486-3080	18	EA
486-3120	20	EA
486-3060	21	EA
486-3070	30	EA

