



Neogen® Clean-Trace® Hygiene Monitoring and Management System

Food safety starts with hygiene monitoring

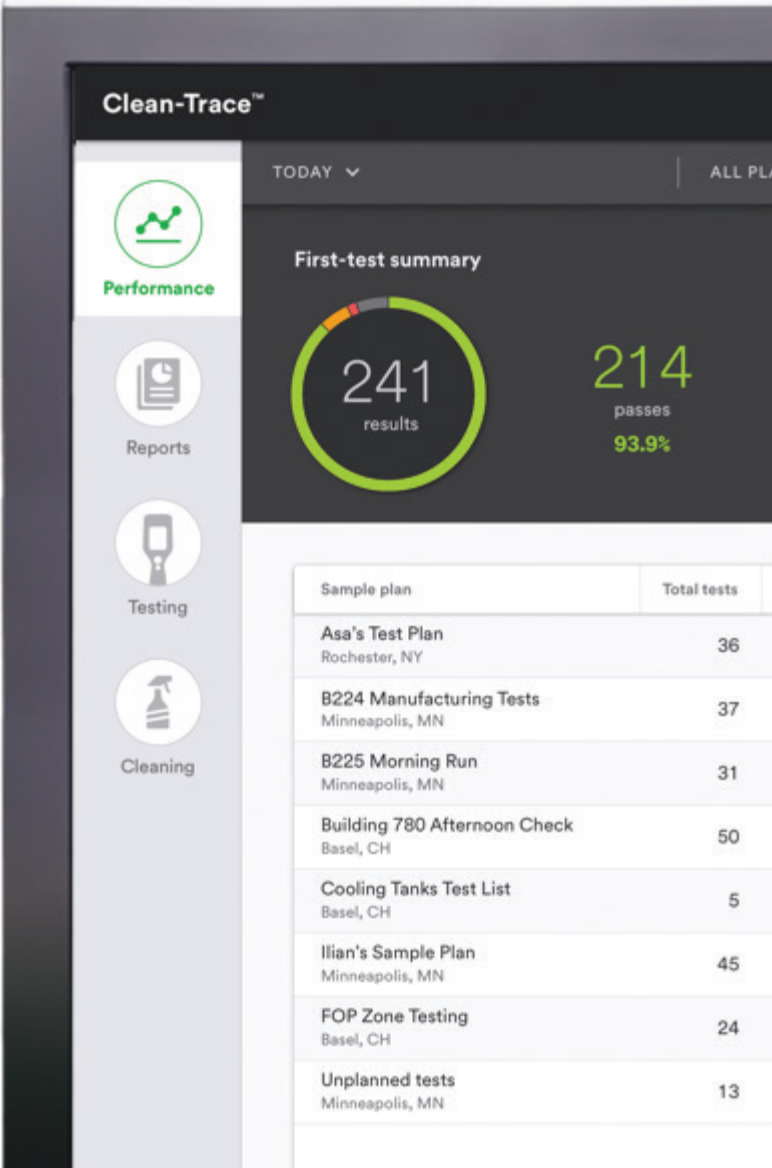




Peace of mind before production

The Clean-Trace Hygiene Monitoring and Management System

When it comes to hygiene monitoring, you've got a lot on the line — and accurate information is critical. But not all systems are the same. Keep things moving with the Clean-Trace Hygiene Monitoring and Management System. It helps you quickly prepare for your audits and is designed to give you peace of mind with patented technology and design.

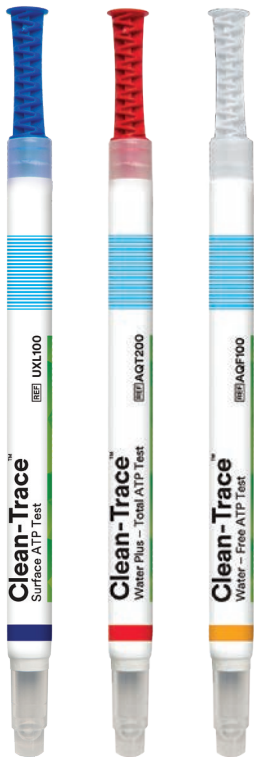


Sample plan	Total tests
Asa's Test Plan Rochester, NY	36
B224 Manufacturing Tests Minneapolis, MN	37
B225 Morning Run Minneapolis, MN	31
Building 780 Afternoon Check Basel, CH	50
Cooling Tanks Test List Basel, CH	5
Ilian's Sample Plan Minneapolis, MN	45
FOP Zone Testing Basel, CH	24
Unplanned tests Minneapolis, MN	13

Ready when you are

Clean-Trace ATP Tests

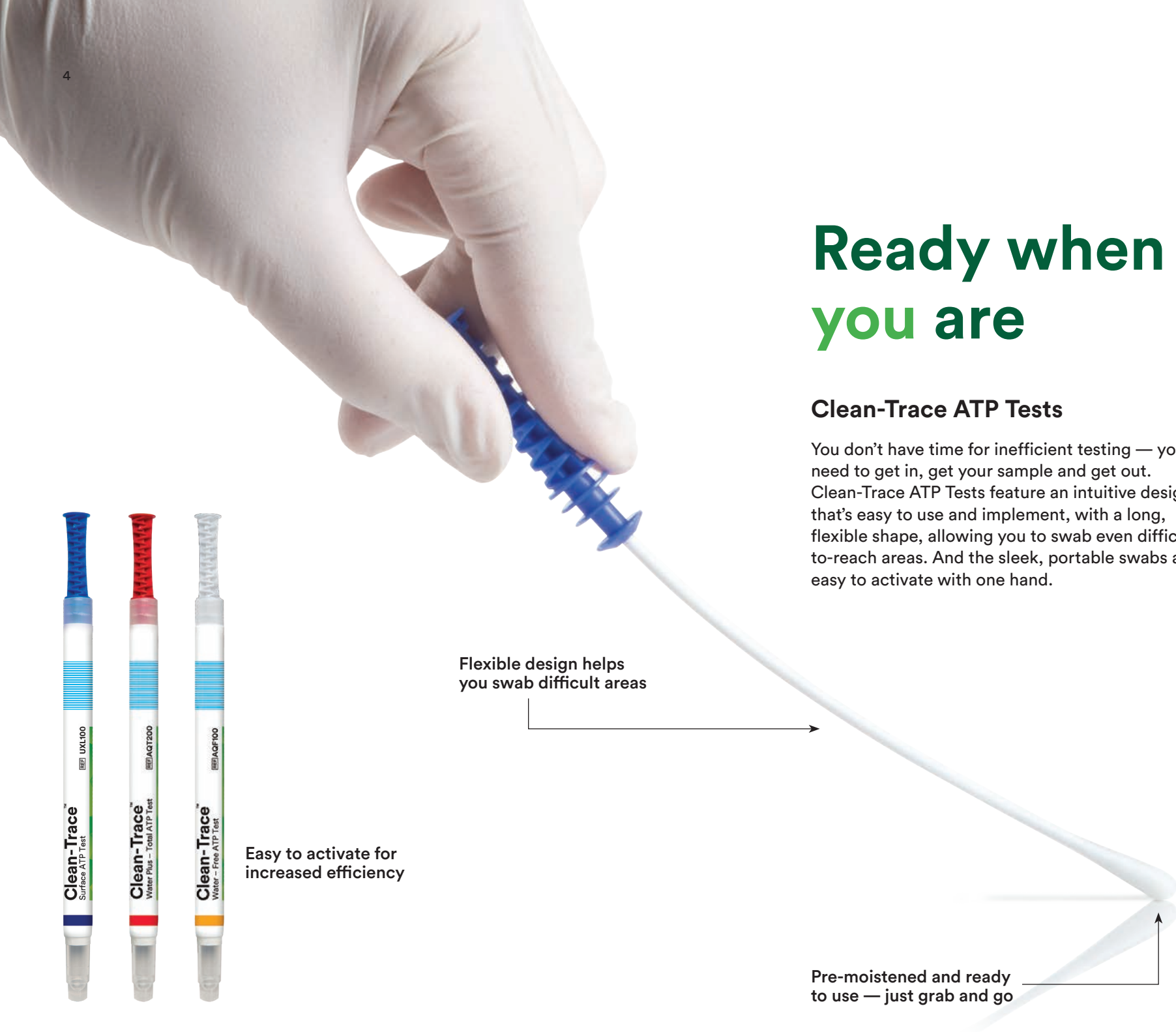
You don't have time for inefficient testing — you need to get in, get your sample and get out. Clean-Trace ATP Tests feature an intuitive design that's easy to use and implement, with a long, flexible shape, allowing you to swab even difficult-to-reach areas. And the sleek, portable swabs are easy to activate with one hand.



Easy to activate for increased efficiency

Flexible design helps you swab difficult areas

Pre-moistened and ready to use — just grab and go



Hygiene monitoring has a new hero



Clean-Trace Luminometer

The Clean-Trace Luminometer features improved ease of use, faster time to result and simple, one-handed operation when compared to the previous generation of Clean-Trace technology. Its ergonomic design makes testing simple and improves user experience. When compared to nine ATP systems, the Clean-Trace Luminometer displayed a higher degree of stability and consistency, you'll get accurate results you can count on.¹

Simple, one-handed operation allows multitasking



Wi-Fi and Bluetooth® Technology



Ergonomic design is comfortable to hold



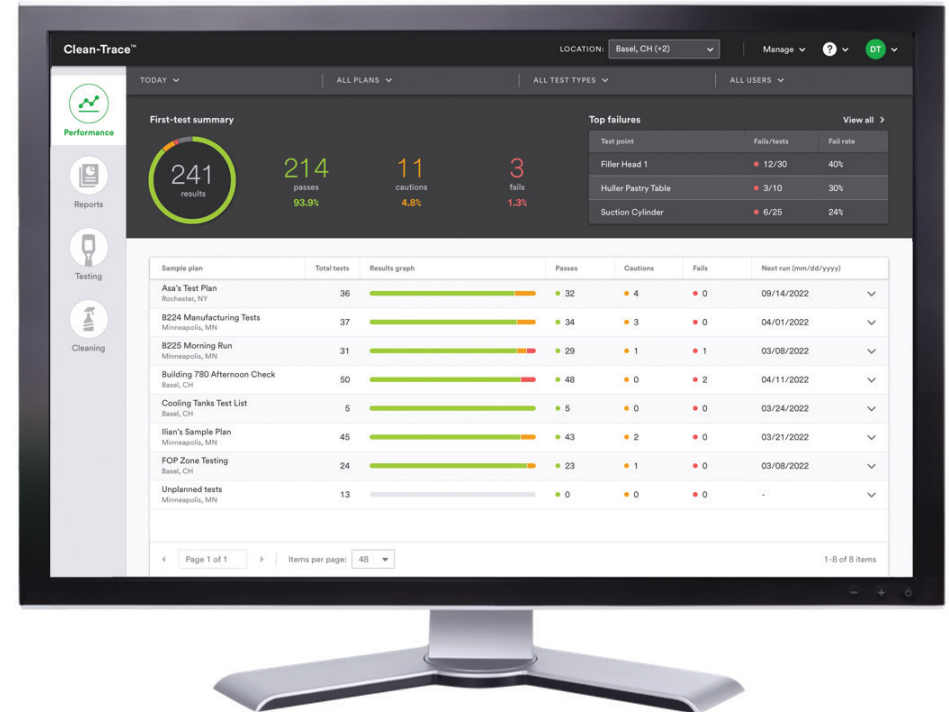
Powerful, flexible, and indispensable

Clean-Trace Hygiene Management Software

Don't waste time searching for reports. The software features a responsive dashboard allowing users a quick and easy way to create, store and retrieve reports. The Clean-Trace Hygiene Management Software turns data into information, helping you identify root causes and take action quickly. The software system supports multi-location functionality, making it easy to view data for specific facilities across various time zones. Put your data to work; identify workplace trends and add value to your environmental monitoring processes.

Data that works for you

Data is just data — until it's simplified, streamlined and presented as information that helps you make better, more educated decisions. With Clean-Trace Hygiene Management Software, you can help pinpoint where a sanitation problem occurred and address it. Find areas of concern or predict where issues could happen. Be proactive and help prevent small problems before they become big ones.



- Intuitive, user-friendly software optimizes productivity
- Redesigned dashboard consolidates information
- Wireless data transfer streamlines workload
- Automates data transfer, report generation and delivery
- Multi-location functionality and reporting

The test that sees beyond the surface

When people are relying on you to identify and manage risk, you need accurate information. And to confidently make these high-risk decisions, you need more than a visual assessment. You need faster results than microbiological tests can deliver. You need a reliable, complete system to help you manage your hygiene monitoring — so you can make the call and get things moving.

	Visual Assessment	Microbiological Tests	ATP Tests
Rapid	+	-	+
Sensitive	-	+	+
Quantitative	-	+	+
Detect product residues	+	-	+
Simple	+	-	+

Microbes and product residue contain Adenosine Triphosphate (ATP), an indicator of biological residues that can be easily detected to measure cleanliness quickly. And unlike other methods, ATP testing is rapid, sensitive, quantitative, effective and simple.



Support you can count on

Ensuring your product is safe for the customer is a big responsibility — and we are here to help you. We have people to support you locally by providing technical help and exceptional service. In addition to service and support Neogen offers on-demand education and training webinars featuring product and industry experts.

To learn more about how the Clean-Trace Hygiene Monitoring and Management System can help protect your brand and your business, contact your local Neogen representative or visit info.neogen.com/Clean-Trace.

Ordering Information

Description	Cat. No.	Contents
Clean-Trace Hygiene Monitoring and Management System*	LM1	1 each
Clean-Trace Surface ATP Test	UXL100	100/case
Clean-Trace Water Plus — Total ATP Test	AQT200	100/case
Clean-Trace Water- Free ATP Test	AQF100	100/case

*Computer not included.



Neogen Corporation, 620 Leshar Place, Lansing, MI 48912 USA.

© Neogen Corporation 2023. All rights reserved. Neogen and Clean-Trace are registered trademarks of Neogen Corporation.

All other marks mentioned are the property of their respective owners.

FS00650_0823